



Quonset Microwave
www.quonsetmicrowave.com

QM1004-0.5-18
Combined RF Upconverter/Downconverter

Option 100: Internal Common LOs

Option 206: 500-1500 MHz IF BW

User Manual

Revision 4.6.0, April 2026

Notices

© 2017-2026 Quonset Microwave

No part of this manual may be reproduced in any form or by any means (including electronic storage and retrieval or translation into a foreign language) without prior permission and written consent from Quonset Microwave as governed by United States and international copyright laws.

Manual Part Number

1004-012-21

Edition

Revision 4.6.0, April 2026

Printed in the USA

Quonset Microwave

315 Commerce Park Road

Unit 3

North Kingstown, RI 02852 USA

Warranty

The material contained in this document is provided "as is," and is subject to be changed, without notice, in future editions. Further, to the maximum extent permitted by applicable law, Quonset Microwave disclaims all warranties, either expressed or implied, with regard to this manual and any information contained herein, including but not limited to the implied warranties of merchantability and fitness for a particular purpose. Quonset Microwave shall not be liable for errors or incidental or consequential damages in connection with the furnishing, use, or performance of this document or of any information contained herein. Should Quonset Microwave and the user have a separate written agreement with warranty terms covering the material in this document that conflict with these terms, the warranty terms in the separate agreement shall control.

Technology Licenses

The hardware and/or software described in this document are furnished under a license and may be used or copied only in accordance with the terms of such license.

Restricted Rights Legend

U.S. Government Restricted Rights. Software and technical data rights granted to the federal government include only those rights customarily provided to end user customers.

Quonset Microwave provides this customary commercial license in Software and technical data pursuant to FAR 12.211 (Technical Data) and 12.212 (Computer Software) and, for the Department of Defense, DFARS 252.227-7015 (Technical Data - Commercial Items) and DFARS 227.7202-3 (Rights in Commercial Computer Software or Computer Software Documentation).

Safety Notices

CAUTION

A **CAUTION** notice denotes a hazard. It calls attention to an operating procedure, practice, or the like that, if not correctly performed or adhered to, could result in damage to the product or loss of data. Do not proceed beyond a **CAUTION** notice until the indicated conditions are fully understood and met.

WARNING

A **WARNING** notice denotes a hazard. It calls attention to an operating procedure, practice, or the like that, if not correctly performed or adhered to, could result in personal injury or death. Do not proceed beyond a **WARNING** notice until the indicated conditions are fully understood and met.

Restricted Rights Legend

The Software and Documentation have been developed entirely at private expense. They are delivered and licensed as "commercial computer software" as defined in DFARS 252.227-7013 (Oct 1988), DFARS 252.211-7015 (May 1991), or DFARS 252.227-7014 (Jun 1995), as a "commercial item" as defined in FAR 2.101(a) or as "restricted computer software" as defined in FAR 25.227-19 (Jun 1987) (or any equivalent agency regulation or contract clause), whichever is applicable. The End User has only those rights provided for such Software and Documentation by the applicable FAR or DFARS clause or the Quonset Microwave standard software agreement for the product involved.

General Warranty

The material contained in this document is provided "as is," and is subjected to being changed, without notice, in future editions. Further, to the maximum extent permitted by applicable law, Quonset Microwave disclaims all warranties, either expressed or implied with regard to this manual and any information contained herein, including but not limited to the implied warranties of merchantability and fitness for a particular purpose. Quonset Microwave shall not be liable for errors or for incidental or consequential damages in connection with the furnishing, use, or performance of this document or any information contained herein. Should Quonset Microwave and the user have a separate written agreement with warranty terms covering the material in this document that conflict with these terms, the warranty terms in the separate agreement shall control. Duration and conditions of warranty for this product may be superseded when the product is integrated into (becomes part of) other Quonset Microwave products. During the warranty period, Quonset Microwave will, at its option, either repair or replace products which prove to be defective. The warranty period begins on the date of delivery or on the date of installation if installed by Quonset Microwave.

Product Safety

The following general safety precautions must be observed during all phases of operation of this device. Failure to comply with these precautions or with specific warnings elsewhere in this manual violates safety standards of design, manufacture, and intended use of this device. Quonset Microwave assumes no liability for the customer's failure to comply with these requirements.

Safety Notices

CAUTION

A **CAUTION** notice denotes a hazard. It calls attention to an operating procedure, practice, or the like that, if not correctly performed or adhered to, could result in damage to the product or loss of data. Do not proceed beyond a **CAUTION** notice until the indicated conditions are fully understood and met.

WARNING

A **WARNING** notice denotes a hazard. It calls attention to an operating procedure, practice, or the likes that, if not correctly performed or adhered to, could result in personal injury or death. Do not proceed beyond a **WARNING** notice until the indicated conditions are fully understood and met.

Personal Safety Considerations

This is a Safety Class I product (provided with a protective earthing ground incorporated in the power cord). The mains plug shall only be inserted in a socket outlet provided with a protective earth contact. Any interruption of the protective conductor, inside or outside the product, is likely to make the product dangerous. Intentional interruption is prohibited. If this product is not used as specified, the protection provided by the equipment could be impaired. This product must be used in a normal condition (in which all means of protection are intact) only.

No operator serviceable parts inside. Refer servicing to qualified personnel. To prevent electrical shock, do not remove covers. For continued protection against fire hazard, replace the line fuse(s) only with fuses of the same type and rating (for example, normal blow, time delay, etc.). The use of other fuses or material is prohibited.

General Safety Information

The following general safety precautions must be observed during all phases of operation of this product. Failure to comply with these precautions or with specific warnings elsewhere in this manual or any manual associated with this product violates safety standards of design, manufacture, and intended use of the product. Quonset Microwave assumes no liability for the customer's failure to comply with these requirements.

WARNING

BEFORE APPLYING POWER TO THIS PRODUCT OR MAKING ANY CONNECTIONS TO THIS PRODUCT ensure that all instruments are connected to the protective (earth) ground. Any interruption of the protective earth grounding will cause a potential shock hazard that could result in personal injury or death.

CAUTION

- Use this device with the cables provided.
 - Do not attempt to service this device. This device should be returned to Quonset Microwave for any service or repairs.
 - Do not open the device.
-

User Environment

This instrument is designed for *indoor* use only.

Markings

The following markings may appear on the equipment or in any related documentation.



This marking indicates that a device, or part of a device, may be susceptible to electrostatic discharges (ESD) which can result in damage to the product. Observed ESD precautions given on the product, or in its user documentation, when handling equipment bearing this mark.



This marking indicates that the device complies with applicable sections of part 15 of the FCC rules.



This marking indicates that the device conforms with applicable EC directives.



This marking indicates that the device complies with the Virtual Instrument Software Architecture (VISA) specification.



This marking indicates that the device complies with the Standard Commands for Programmable Instrumentation (SCPI) specification.



This marking indicates that the device complies with the USB Test & Measurement Class (USB TMC) and the USB 488 subclass specifications.



This marking indicates that the device communicates over the Universal Serial Bus (USB).



This marking indicates that the device communicates over Ethernet.

Revision Control

Revision	Description of Changes	Date
1.0.0	Initial Release	10/25/2022
1.0.1	Updated Firmware Updates chapter	10/28/2022
1.1.0	Updated I/O Specifications	11/09/2022
1.1.1	Fixed typo in FREQ:LO1:LOCK Added missing ASR parameter in user states	11/18/2022
2.0.0	Updated for R02 hardware	02/22/2024
3.0.0	Updated System Block Diagrams, Windows GUI	10/07/2024
4.0.0	Updated Windows GUI Added TCP/IP support info Increased size of System Block Diagram figures	11/27/2024
4.0.1	Updated I/O Specifications	12/17/2024
4.1.0	Added Supported Devices to PIC Firmware Updates Other updates to Firmware Updates section	02/27/2025
4.1.1	Added IPE instructions to PIC Firmware Updates	03/12/2025
4.1.2	Updated Firmware Updates for v4.1.0 Removed unsupported CCS info	03/28/2025
4.2.0	Added DHCP info	04/23/2025
4.4.0	Added v4.3.0/v4.4.0 Firmware Update Info	06/13/2025
4.6.0	Added AGL command and Converter Mode 5	04/20/2026

Contents

Notices	i
Manual Part Number	i
Edition	i
Warranty	i
Technology Licenses	i
Restricted Rights Legend	i
Safety Notices	i
Restricted Rights Legend	ii
General Warranty	ii
Product Safety	ii
Safety Notices	ii
Personal Safety Considerations	iii
General Safety Information	iii
User Environment	iii
Markings	iv
Revision Control	v
1 Overview	2
1. Input/Output Specifications	3
2. General Description	5
3. System Block Diagram	6
2 Firmware Updates	8
1. Introduction	9
2. Firmware Update Files	9
3. FPGA Firmware Updates	11
4. PIC Firmware Updates	19
3 Remote Operation	25
1. Introduction	27
1.1 USB Configuration	27
1.2 Command Syntax	27
1.2.1 Mnemonic Forms	27
1.2.2 Using a Semicolon(;)	27
1.2.3 Using Whitespace	27
1.2.4 Using "?" Commands	27
1.2.5 Using "*" Commands	27
1.3 Diagram Syntax Conventions	27
1.4 Default Units	28
1.5 Status Reporting	28

1.6	SCPI Data Types	28
1.6.1	<boolean> Definition	28
1.6.2	<character_data> Definition	29
1.6.3	<NAN> Definition	29
1.6.4	<non-decimal numeric> Definition	29
1.6.5	<NRf> Definition	29
1.6.6	<NR1> Definition	29
1.6.7	<NR2> Definition	29
1.6.8	<NR3> Definition	30
1.6.9	<numeric_value> Definition	30
1.6.10	<string> Definition	30
1.7	Input Message Terminators	31
1.8	Compliance Information	31
1.8.1	IEEE-488.2 Compliance	31
1.8.2	USBTMC Compliance	31
1.8.3	VISA Compliance	32
2.	VISA Descriptors and Configuration	33
2.1	USBTMC	33
2.1.1	VISA Descriptors	33
2.1.2	USBTMC VISA Code Example	33
2.2	TCPIP	34
2.2.1	VISA Descriptors	34
2.2.2	VISA Attributes	34
2.2.3	TCPIP VISA Code Example	34
4	Control Commands	35
1.	Command Quick Reference Guide	38
1.1	Common (*) Commands	38
1.2	EtherNET Subsystem	39
1.3	FREQuency Subsystem	39
1.4	POWER Subsystem	40
1.5	STATus Subsystem	41
1.6	SYSTEM Subsystem	41
2.	EtherNET Subsystem Command Reference	42
2.1	EtherNET:DHCP	42
2.2	EtherNET:GATEway	43
2.3	EtherNET:IPADDRESS	44
2.4	EtherNET:MACaddress	45
2.5	EtherNET:PORT	46
2.6	EtherNET:SUBnet	47
3.	FREQuency Subsystem Command Reference	48
3.1	FREQuency:ASR	48
3.2	FREQuency:LOCK	49
3.3	FREQuency:MODE	50
3.4	FREQuency:TUNE	51
3.5	FREQuency:TUNErACTual	52

3.6	FREQuency:CH1:ASR	53
3.7	FREQuency:CH1:MODE	54
3.8	FREQuency:CH2:ASR	55
3.9	FREQuency:CH2:MODE	56
3.10	FREQuency:LO1:EXTErnal	57
3.11	FREQuency:LO1:LOCK	58
3.12	FREQuency:LO2:EXTErnal	59
3.13	FREQuency:LO2:LOCK	60
3.14	FREQuency:REFErence:EXTErnal	61
4.	POWEr Subsystem Command Reference	62
4.1	POWEr:AGL	62
4.2	POWEr:LNA	63
4.3	POWEr:RF	64
4.4	POWEr:CH1:AGL	65
4.5	POWEr:CH1:AT1	66
4.6	POWEr:CH1:AT2	67
4.7	POWEr:CH1:LNA	68
4.8	POWEr:CH2:AGL	69
4.9	POWEr:CH2:AT1	70
4.10	POWEr:CH2:AT2	71
4.11	POWEr:CH2:LNA	72
5.	STATUs Subsystem Command Reference	73
5.1	STATUs:OPERation	73
5.2	STATUs:OPERation:CONDition	74
5.3	STATUs:OPERation:ENABle	75
5.4	STATUs:PRESet	76
5.5	STATUs:QUEStionable	77
5.6	STATUs:QUEStionable:CONDition	78
5.7	STATUs:QUEStionable:ENABle	79
6.	SYSTEem Subsystem Command Reference	80
6.1	SYSTEem:BOOTstate	80
6.2	SYSTEem:CURRent	81
6.3	SYSTEem:ERRor	82
6.4	SYSTEem:FIRMWare	86
6.5	SYSTEem:LOADstate	87
6.6	SYSTEem:OPTions	88
6.7	SYSTEem:READstate	89
6.8	SYSTEem:SAVEstate	91
6.9	SYSTEem:SERialNUMber	92
6.10	SYSTEem:USBPID	93
6.11	SYSTEem:VERSion	94
7.	IEEE 488.2 Command Reference	95
7.1	Introduction	95
7.2	*CLS	96
7.3	*ESE <NRf>	97
7.4	*ESR?	98

7.5	*IDN?	99
7.6	*OPC	100
7.7	*RCL <NRf>	101
7.8	*RST	102
7.9	*SAV <NRf>	103
7.10	*SDS <NRf>	104
7.11	*SRE <NRf>	105
7.12	*STB?	106
7.13	*TST?	107
7.14	*WAI	108
5	Windows Control GUI	109
1.	Overview	110
2.	Connection	111
3.	Supported Devices	111
	Index	112

List of Tables

1.1	Input/Output Specifications	3
1.2	Converter Operation Modes	7
2.1	PIC Firmware Revision History	9
3.2	Default Units	28
4.1	Common (*) Commands Summary	38
4.2	EtherNET Subsystem Commands Summary	39
4.3	FREQUency Subsystem Commands Summary	39
4.4	POWER Subsystem Commands Summary	40
4.5	STATus Subsystem Commands Summary	41
4.6	SYSTem Subsystem Commands Summary	41
4.7	Converter Operation Modes	50
4.8	Converter Operation Modes	54
4.9	Converter Operation Modes	56
4.10	Error Codes and Messages	82
4.11	IEEE 488.2 Common commands	95
4.12	*ESE bit mapping	97
4.13	*ESR? mapping	98
4.14	*OPC mapping	100
4.15	*SRE bit mapping	105
4.16	*STB? mapping	106

List of Figures

1.1	QM1004-0.5-18 Combined RF Upconverter/Downconverter system	5
1.2	QM1004–0.5–18 Upconverter Block Diagram	6
1.3	QM1004–0.5–18 Downconverter Block Diagram	6
2.1	iMPACT: Automatically create project	13
2.2	iMPACT: Manually Create Project	13
2.3	iMPACT: Boundary Scan	14
2.4	iMPACT: Assign Configuration Files	14
2.5	iMPACT: Attach PROM	15
2.6	iMPACT: Configure PROM	15
2.7	iMPACT: FPGA Programming Properties	16
2.8	iMPACT: FPGA Programming Properties	16
2.9	iMPACT: FLASH Programming Properties	17
2.10	iMPACT: Programming	17
2.11	iMPACT: Program Succeeded	18
2.12	Supported PIC Programmers	19
2.13	IPE Installation Requirements	20
2.14	IPE Device Selection	21
2.15	IPE Tool Connect	22
2.16	IPE Hex File Load	23
2.17	IPE Program Complete	24
5.1	Windows® Control GUI	110



1 Overview

In This Chapter

1. Input/Output Specifications	3
2. General Description	5
3. System Block Diagram	6

1. Input/Output Specifications

Table 1.1: Input/Output Specifications

Parameter	Min	Typ	Max	Unit
External 10 MHz Reference Input				
Frequency		10		MHz
Power Level	-10	0	+10	dBm
External LO1 Input				
Frequency	21.5		39	GHz
Power Level	-5	+5	+15	dBm
External LO2 Input				
Frequency		22		GHz
Power Level	-5	+5	+15	dBm
Upconverter IF Input				
Frequency	500	1000	1500	MHz
Power Level (absolute maximum)		-30	+20	dBm
Downconverter RF Input				
Frequency	0.5	9.25	18	GHz
Power Level (absolute maximum)		-40	+20	dBm
LO1 Output				
Frequency	21.5		39	GHz
Power Level	+10	+15	+20	dBm
LO2 Output				
Frequency		22		GHz
Power Level	+10	+15	+20	dBm
10 MHz Reference Output - Sine Wave				
Frequency		10		MHz
Power Level	0	+12	+20	dBm
Upconverter RF Output @ 0 dB attenuation				
Frequency	0.5	9.25	18	GHz
Gain (1.5 GHz): LNA On		70		dB
Gain (9.25 GHz): LNA On		55		dB
Gain (17 GHz): LNA On		45		dB
Gain (1.5 GHz): LNA Off		55		dB
Gain (9.25 GHz): LNA Off		40		dB
Gain (17 GHz): LNA Off		30		dB
Maximum Output Power Level		25		dBm
Downconverter IF Output @ 0 dB attenuation				
Frequency	500	1000	1500	MHz
Gain (1.5 GHz): IF Output Amp On		50		dB

Gain (9.25 GHz): IF Output Amp On	40	dB
Gain (17 GHz): IF Output Amp On	30	dB
Gain (1.5 GHz): IF Output Amp Off	35	dB
Gain (9.25 GHz): IF Output Amp Off	25	dB
Gain (17 GHz): IF Output Amp Off	15	dB
Maximum Output Power Level	18	dBm

2. General Description

The QM1004-0.5-18 is a Combined RF Upconverter/Downconverter housed in a 1U box. The QM1004-0.5-18 is controlled either through the onboard USB or TCP/IP connection. The QM1004-0.5-18 delivery kit contains a user manual, power supply, and USB A- μ B cable. A model of the QM1004-0.5-18 is shown below in Fig. 1.1.



Figure 1.1: QM1004-0.5-18 Combined RF Upconverter/Downconverter system

The QM1004-0.5-18 Combined RF Upconverter/Downconverter has been equipped with Option -100, which adds Local Oscillator (LO) sources, making the QM1004-0.5-18 a self contained system, requiring only the externally applied RF or IF signals for proper operation. Option -206 has an IF frequency range from 500-1500MHz. The Local Oscillators (LOs) in the QM1004-0.5-18 are locked to a common internal reference. The user has the option of supplying their own 10 MHz reference through the BNC connector located on the back panel of the QM1004-0.5-18.

3. System Block Diagram

System block diagrams for the QM1004-0.5-18 Combined RF Upconverter/Downconverter are shown in Figures 1.2 and 1.3. Internal attenuators in the upconverter and downconverters are controlled digitally via a microcontroller, which interfaces to a PC through USB or TCP/IP. The microcontroller outputs basic status messages on a 32-character Liquid Crystal Display (LCD) mounted on the faceplate of the unit. An internal 10 MHz reference is phase-locked to all of the internal LOs, with a BNC-F connector providing the option for LOs to lock to a user-provided 10 MHz external reference. An additional BNC-F connector outputs a 10 MHz reference for use by external test equipment. Switching between the internal and external LO reference is controlled by the microcontroller.

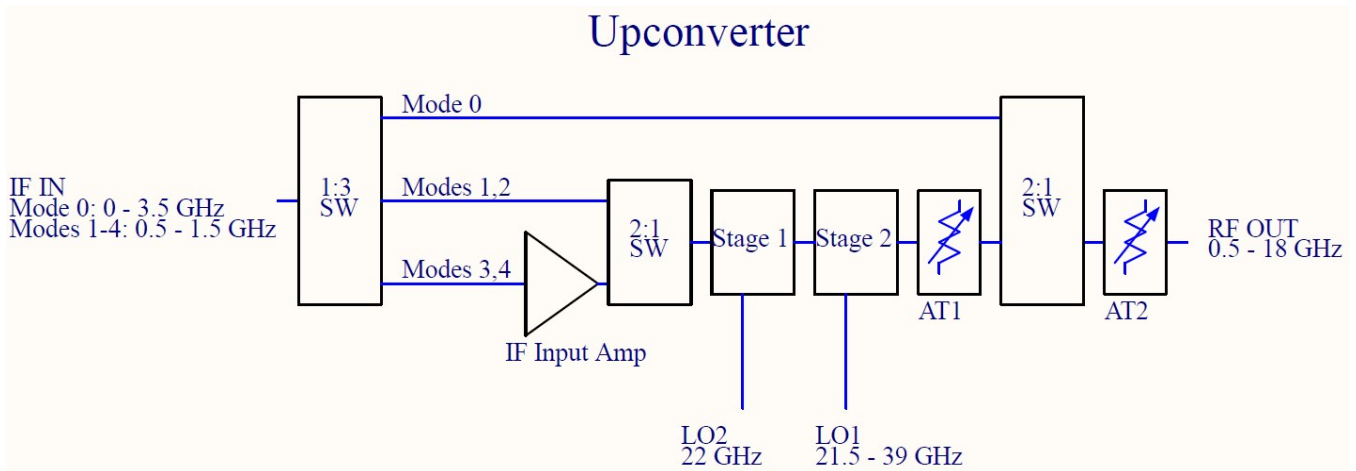


Figure 1.2: QM1004–0.5–18 Upconverter Block Diagram

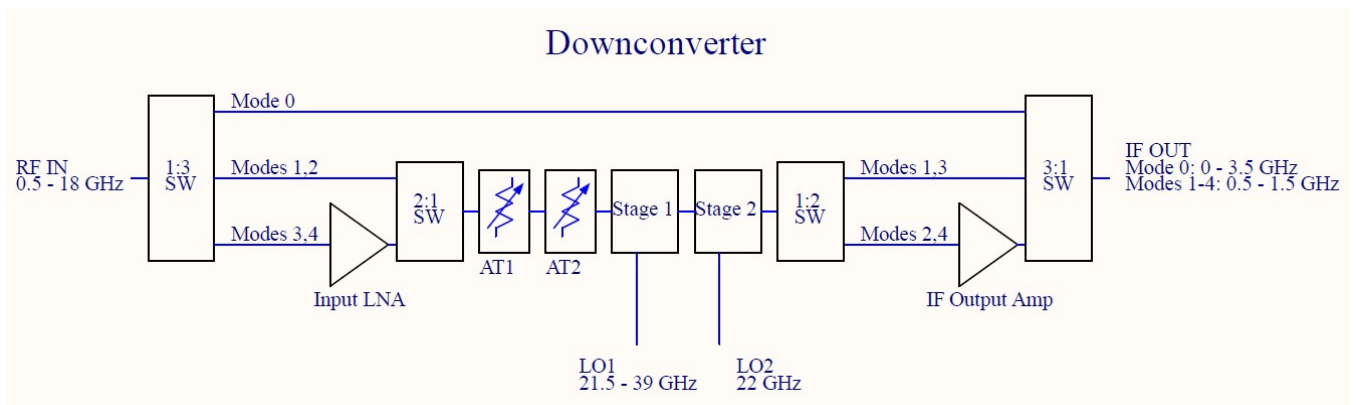


Figure 1.3: QM1004–0.5–18 Downconverter Block Diagram

Using the FREQUENCY:MODE command (page 50), the system can operate in several modes, allowing an input low noise amplifier to be switched on or off, an IF output amplifier to be switched on or off, or for the converter to be bypassed or terminated.

Table 1.2: Converter Operation Modes

Converter Mode	Converter Status	Input Amplifier	Output Amplifier
0	Bypassed	Off	Off
1	Enabled	Off	Off
2	Enabled	Off	On
3	Enabled	On	Off
4	Enabled	On	On
5	Terminated	N/A	N/A



2 Firmware Updates

In This Chapter

1. Introduction	9
2. Firmware Update Files	9
3. FPGA Firmware Updates	11
4. PIC Firmware Updates	19

1. Introduction

The QM1004-0.5-18 Combined RF Upconverter/Downconverter is continually being improved and may require firmware updates to correct problems in previous firmware versions or to add new features that were not yet implemented in previous firmware versions. Table 2.1 details Firmware Revisions that have been released and which features they fixed or introduced.

Table 2.1: PIC Firmware Revision History

PIC Firmware Version	Reason To Update
v1.0.0	N/A (Initial Release)
v2.0.0	N/A (Initial Release for R02 hardware update)
v3.0.0	N/A (Initial Release for R03 hardware update)
v4.0.0	Added TCP/IP support (Requires R03 hardware currently)
v4.1.0	Fixed TCP/IP functionality (Requires R03 hardware currently)
v4.3.0	Added DHCP support (Requires R03 hardware currently)
v4.4.0	Changed LCD update speed and frequency
v4.6.0	Added Converter Mode 5 Added AGL
FPGA Firmware Version	Reason To Update
v1.0.0	N/A (Initial Release)
v2.0.0	N/A (Initial Release for R02 hardware update)
v3.0.0	N/A (Initial Release for R03 hardware update)
v4.0.0	Added TCP/IP support (Requires R03 hardware currently)
v4.1.0	Fixed TCP/IP functionality (Requires R03 hardware currently)
v4.3.0	Added DHCP support (Requires R03 hardware currently)
v4.4.0	Changed LCD update speed and frequency
v4.6.0	Added Converter Mode 5 Added AGL

2. Firmware Update Files

The required files to perform firmware updates are uploaded onto the Quonset Microwave FTP server and need to be downloaded and extracted to a location on the computer performing the update prior to

continuing.

Firmware updates can be obtained by clicking the following link and navigating to the download link in the Software tab:

<http://www.quonsetmicrowave.com/QM1004-0.5-18-p/qm1004-0.5-18.htm>

The zip files contain the necessary files required to perform the firmware updates. PIC Firmware Updates require *.hex files and FPGA Firmware Updates require both *.bit files and *.mcs files. If the firmware update zip file contains all three files, it is recommended to upgrade both PIC and FPGA firmware versions to ensure proper performance as they likely work together and require each other for correct interaction.

Programming with iMPACT

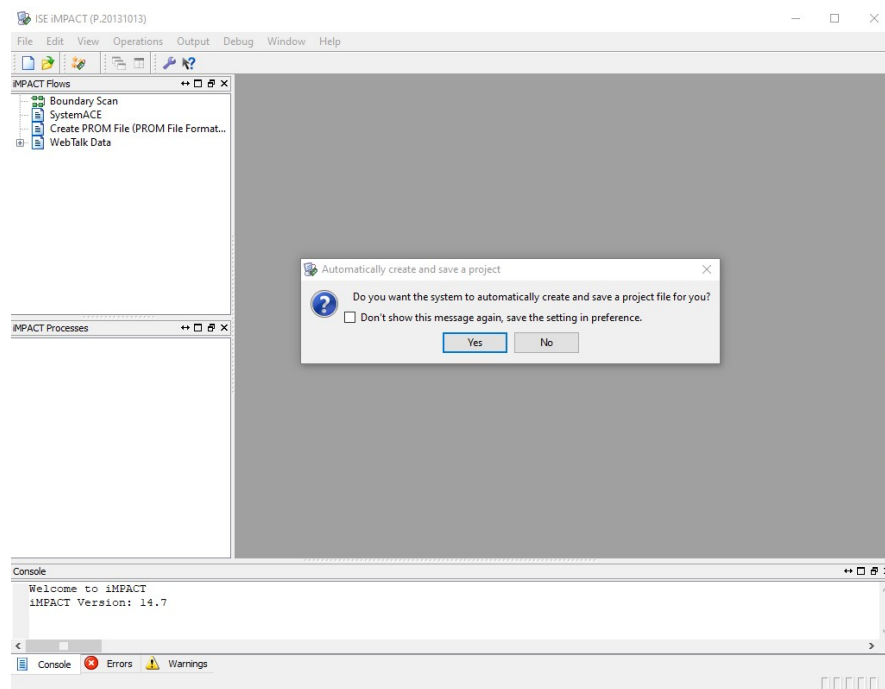


Figure 2.1: iMPACT: Automatically create project

When iMPACT is started, it will first ask if you want it to create and save a project file for you. Choose 'No', as reusing projects sometimes results in outdated files being programmed, which were saved in previous sessions.

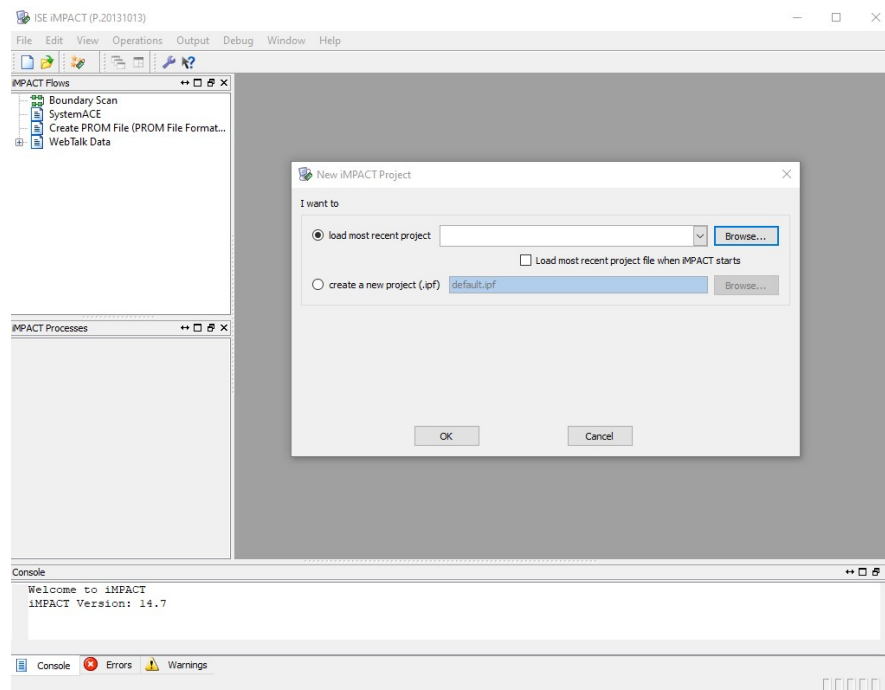


Figure 2.2: iMPACT: Manually Create Project

Similarly, select 'Cancel' when it asks you to load or create a new project next.

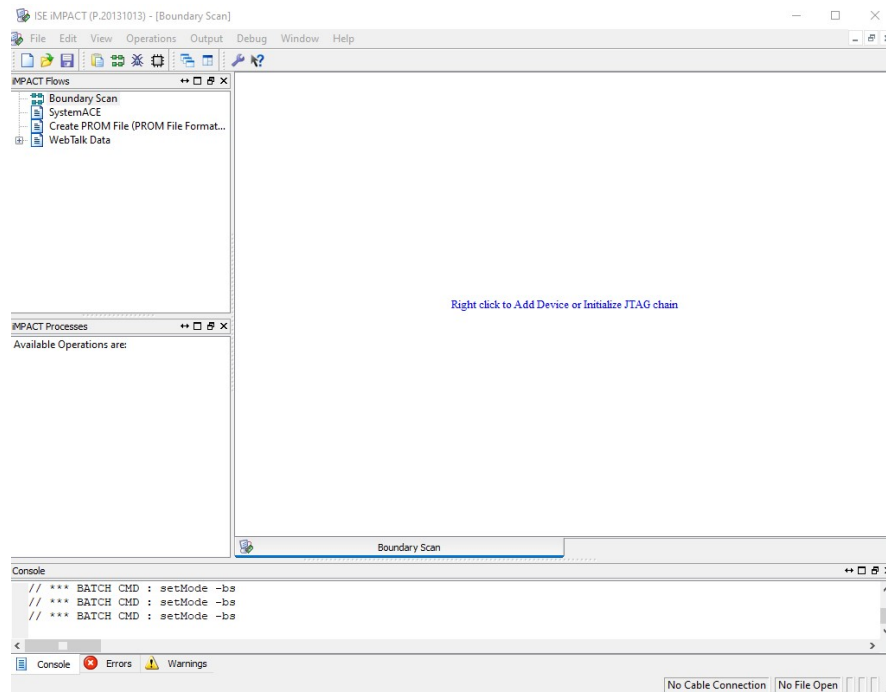


Figure 2.3: iMPACT: Boundary Scan

Double-click 'Boundary Scan' in the upper-left of the program. This will open a Boundary Scan window, which is where we interact with the device.

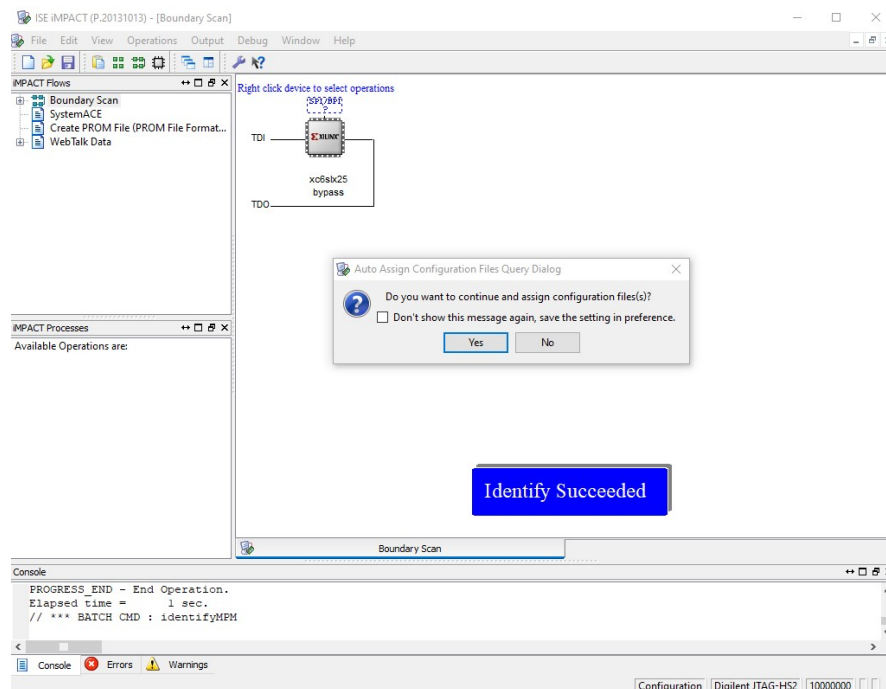


Figure 2.4: iMPACT: Assign Configuration Files

Right-click in the Boundary Scan window and select 'Initialize Chain', which will search for the target device. After the device is found, choose 'Yes' when it asks if you want to assign configuration files.

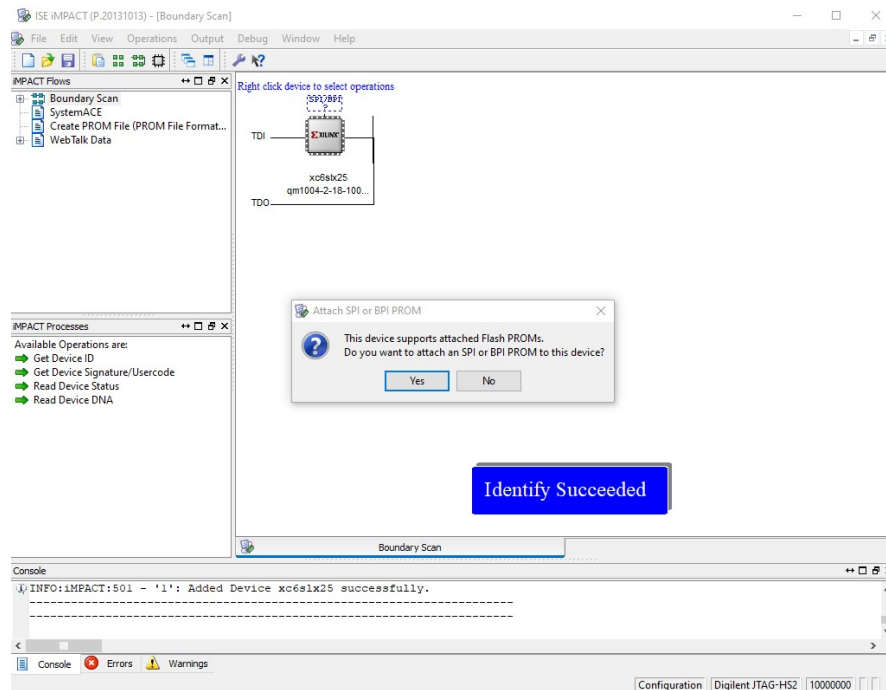


Figure 2.5: iMPACT: Attach PROM

Select the QM1004-0.5-18-100-206_v1.0.0.bit file provided and the text under the device will change from 'Bypass' to qm1004-0.5-18-100-206_v1.0.0.bit and it will ask if you want to attach a PROM. Choose 'Yes'.

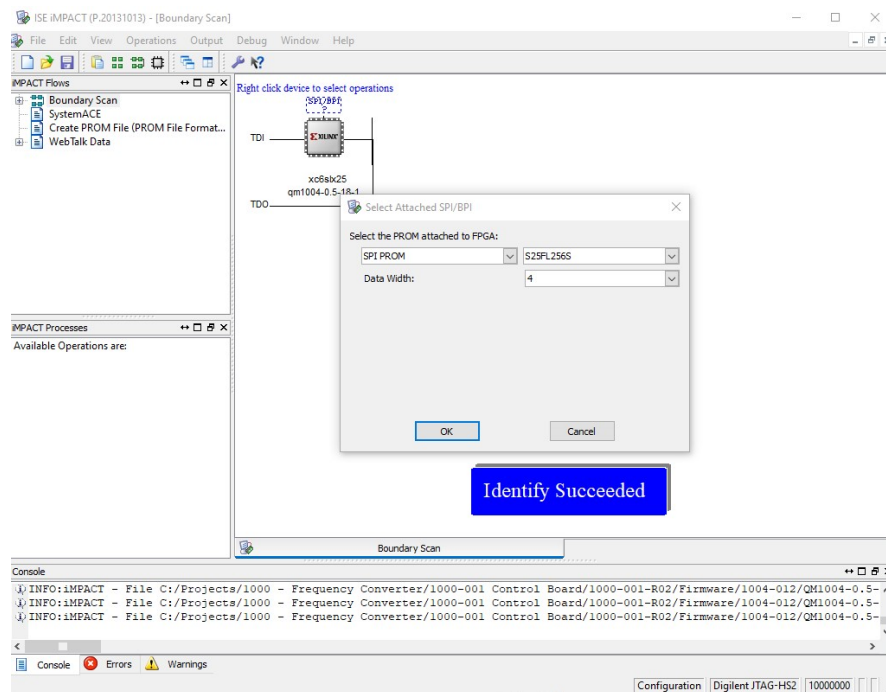


Figure 2.6: iMPACT: Configure PROM

Select the QM1004-0.5-18-100-206_v1.0.0.mcs file provided and it will ask you to configure the PROM. Select 'S25FL256S' for the device and '4' for the data width as shown.

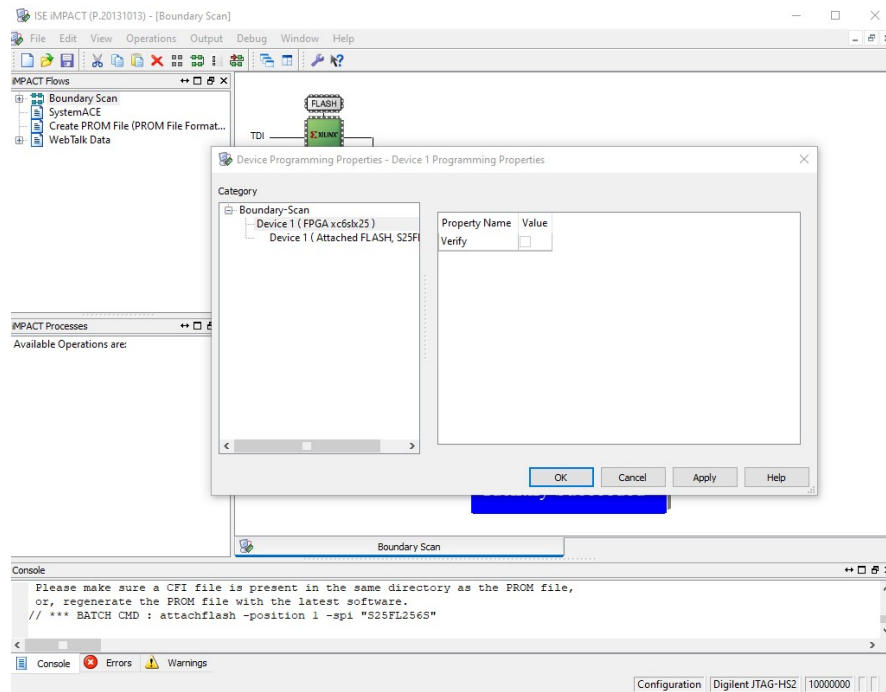


Figure 2.7: iMPACT: FPGA Programming Properties

On the first Device Programming Properties screen, leave the box to verify the FPGA write unchecked and click 'OK'.

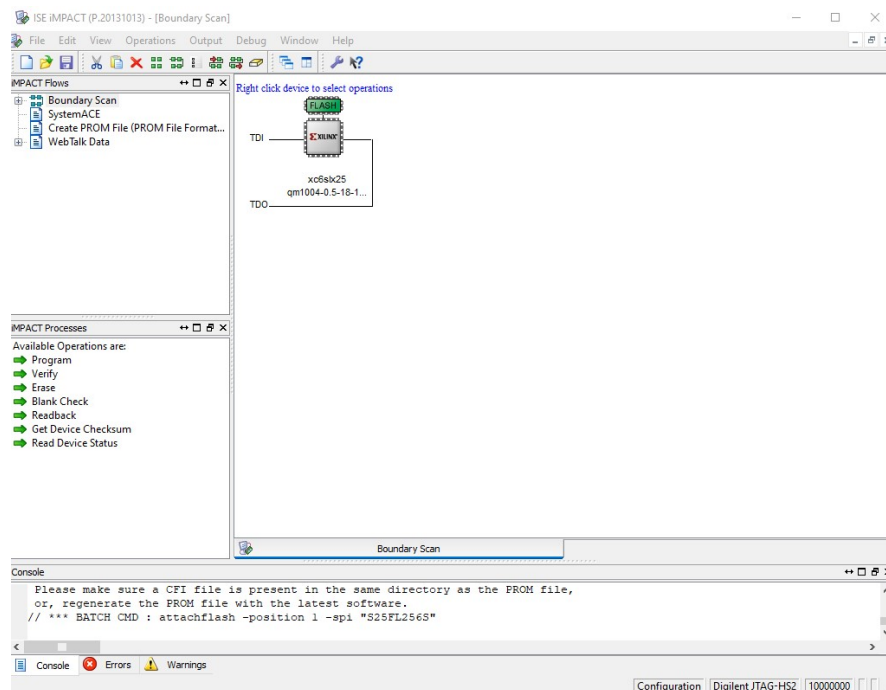


Figure 2.8: iMPACT: FPGA Programming Properties

Click the FLASH device to select the PROM as the device to be programmed.

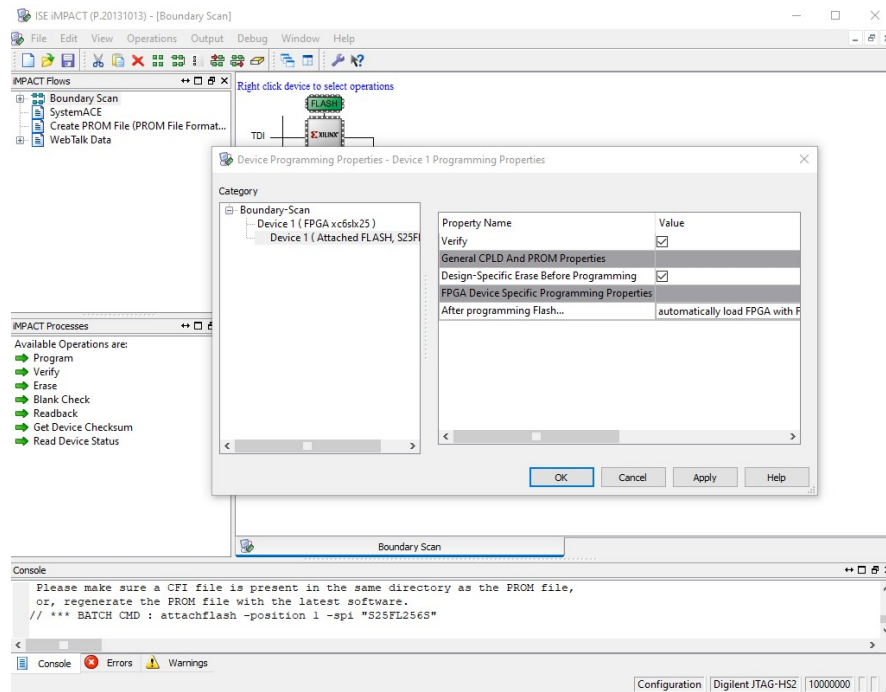


Figure 2.9: iMPACT: FLASH Programming Properties

Right-click the FLASH device and click Program, which will open the Device Programming Properties for the PROM. Leave Verify and Erase Before Programming both checked, and leave the After Programming selection set to automatically load FPGA when finished (all defaults) and click 'OK'.

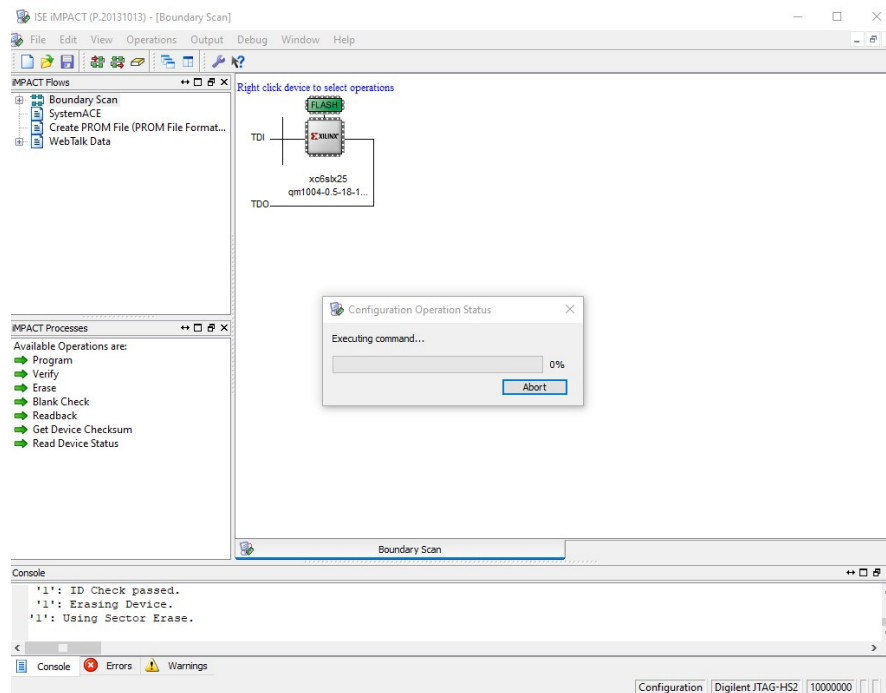


Figure 2.10: iMPACT: Programming

The erase and write operations will begin and show a Configuration Operation Status bar.

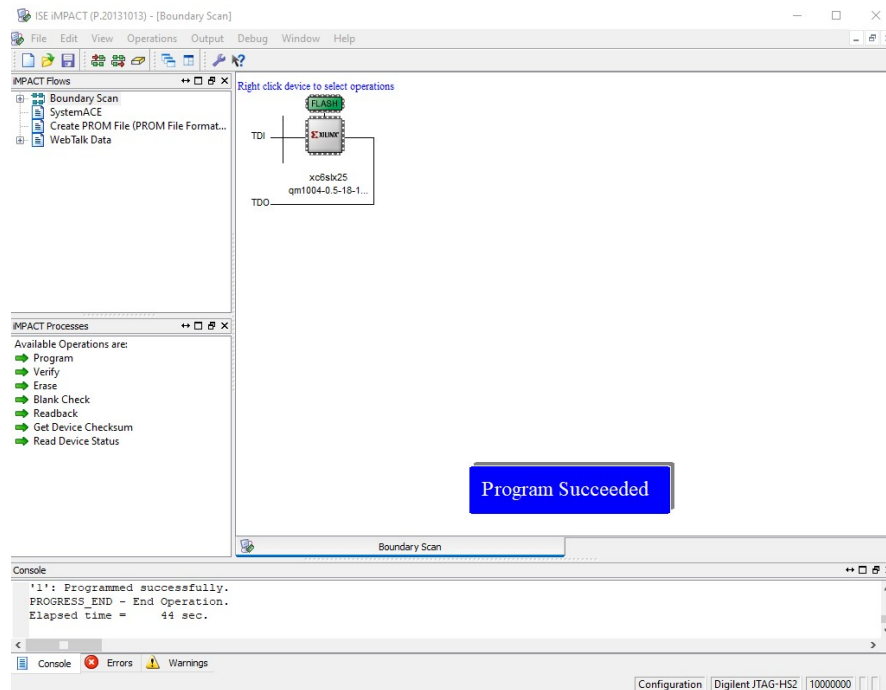


Figure 2.11: iMPACT: Program Succeeded

The status will go up to 4% before completing and displaying 'Program Succeeded'. This PROM write took 44 seconds, which is typical for a PROM write to this device. The Combined RF Upconverter/Downconverter should then be power-cycled, as the image is loaded to the FPGA on power-up by the PIC.

4. PIC Firmware Updates

The QM1004-0.5-18 uses a Microchip Tehcnology, Inc. PIC32MZ2048EFH144 processor. The PIC firmware update process is done using an In-Circuit Serial Programmer (ICSP) with an RJ-12 connection. The following figure lists the currently supported programmers.

Device Name	MPLABX	ICD5D	ICD5P	PICKit5D	PICKit5P	ICE4D	ICE4P	ICD4D	ICD4P	PICKit4D	PICKit4P	SNAPD	SNAPP	RealIced	RealIcep	EDBGD	EDBGP	mEDBGD	mEBGGP	nEDBGD	nEBGGP	AT-ICED	AT-ICEP	AT-ICEPD	AT-ICEPP	Sim	PICKit3D	PICKit3P	ICD3D	ICD3P	PM3	CODE-CONFIGURATOR	MPLAB-HARMONY	Compiler	Version	
PIC32MZ2048EFH144	5.10	Y	Y	Y	Y	Y	Y	Y	Y	Y	Y	Y	Y	Y	Y	N	N	N	N	N	N	N	N	N	N	Y	Y	Y	Y	Y	Y	Y	N	Y	XC32	1.41

The D and P at the end of the tool name represent the Debugging and Programming functions of the tool.
 ICD5: ICD 5 In-Circuit Debugger
 PICKit5: PICKit 5 In-Circuit Debugger
 ICE4: ICE 4 In-Circuit Emulator, Programmer and Debugger
 ICD4: ICD 4 In-Circuit Debugger
 PICKit4: PICKit 4 In-Circuit Debugger
 SNAP: SNAP In-Circuit Debugger
 EDBG: Atmel Embedded Debugger
 mEDBG: Mini Embedded Debugger
 nEDBG: Nano Embedded Debugger
 RealIce: MPLAB Real Ice In-Circuit Emulator
 AT-ICE: ATMEL-ICE
 AT-ICEPD: Power Debugger
 Sim: Simulator
 PICKit3: PICKit 3 In-Circuit Debugger
 ICD3D: ICD 3 In-Circuit Debugger
 PM3: PM3 Universal Device Programmer

Figure 2.12: Supported PIC Programmers

An updated list of devices currently supported can be located at:

https://packs.download.microchip.com/DeviceDoc/Device_Support.pdf

PIC Firmware Updates are recommended to be applied using Microchip's IPE (Integrated Programming Environment), which can be downloaded from:

<https://ww1.microchip.com/downloads/aemDocuments/documents/DEV/ProductDocuments/SoftwareTools/MPLABX-v6.20-windows-installer.exe>

During the installation process, in the Select Applications window, you can choose to only install the necessary MPLAB IPE (Integrated Programming Environment) and support for 32-bit MCUs and MPUs as shown below.

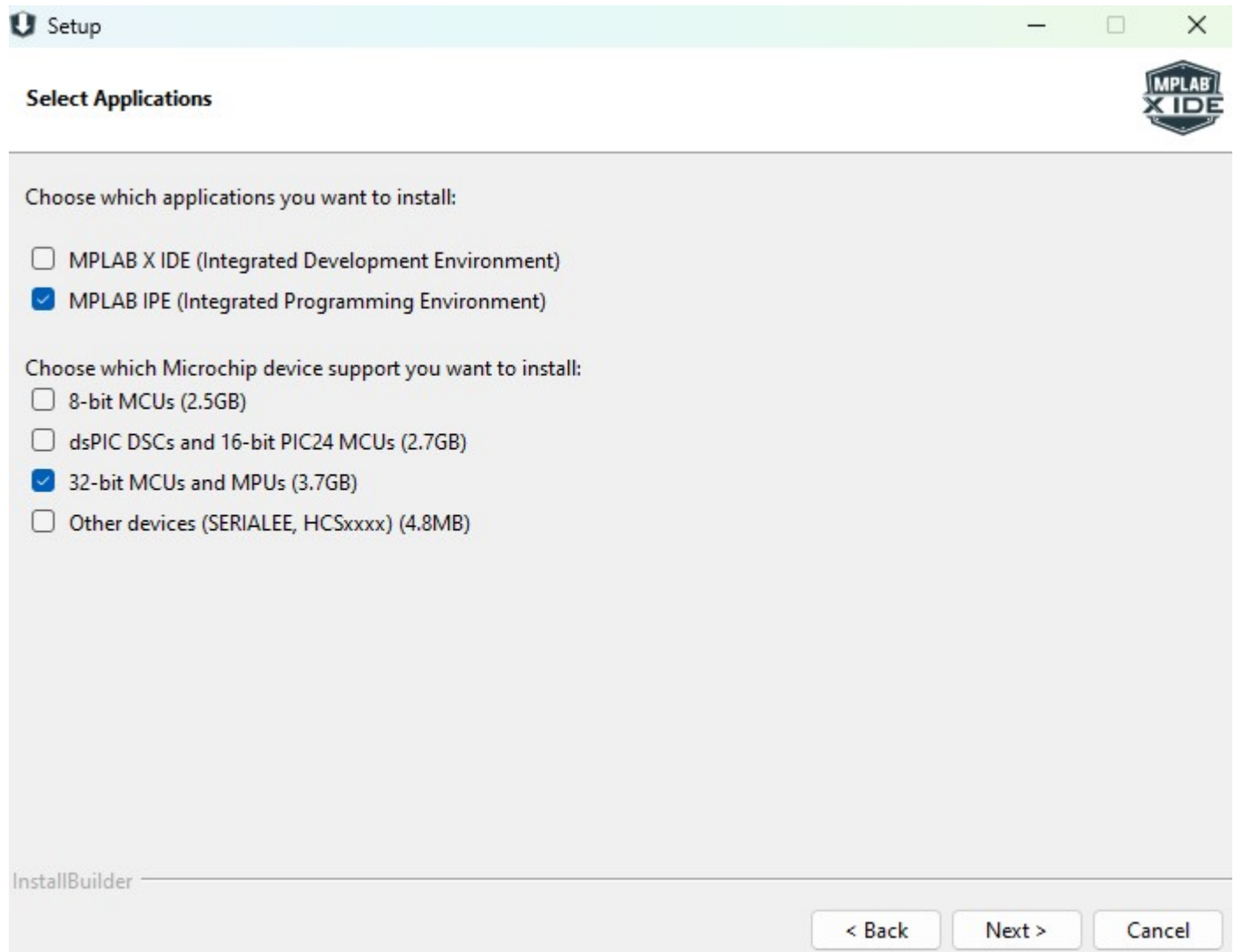


Figure 2.13: IPE Installation Requirements

After opening MPLAB IPE, choose PIC32MZ2048EFH144 for the Device and click Apply to set the device.

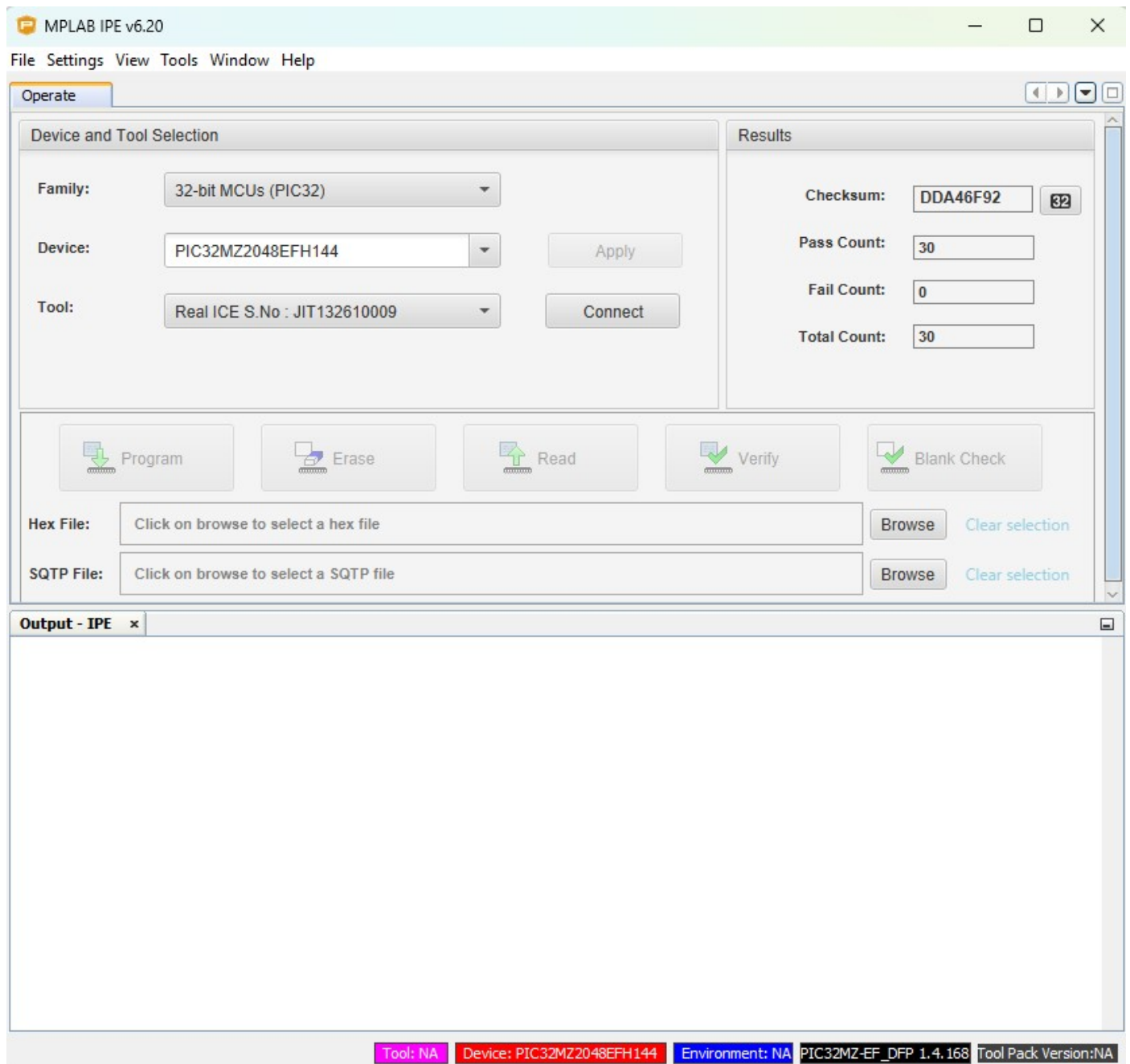


Figure 2.14: IPE Device Selection

Choose your programmer from the Tool pulldown if not already selected and click Connect.

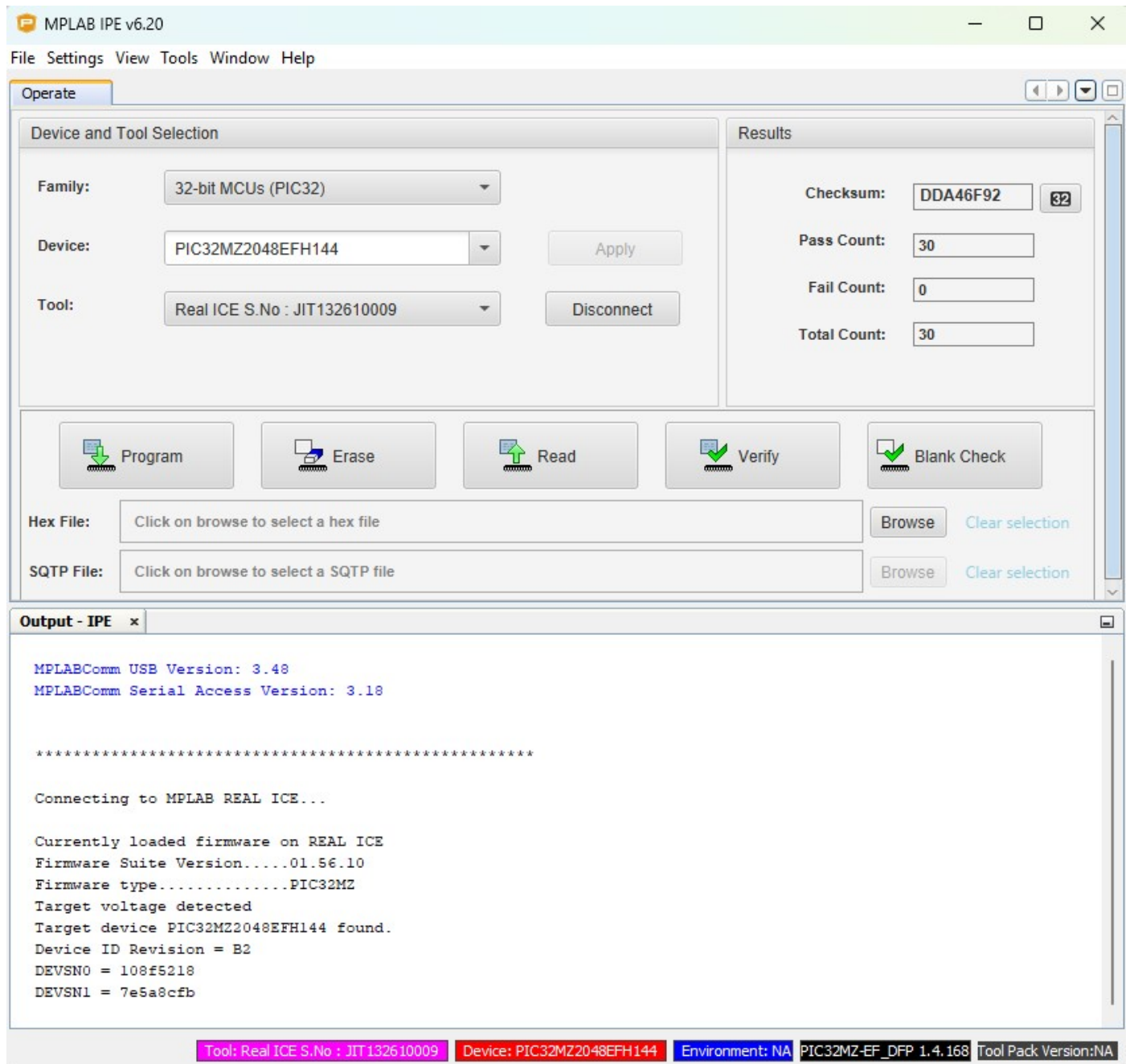


Figure 2.15: IPE Tool Connect

Click Browse to load a Hex File and select the QM1004-0.5-18-100-206_v4.1.0.hex file.

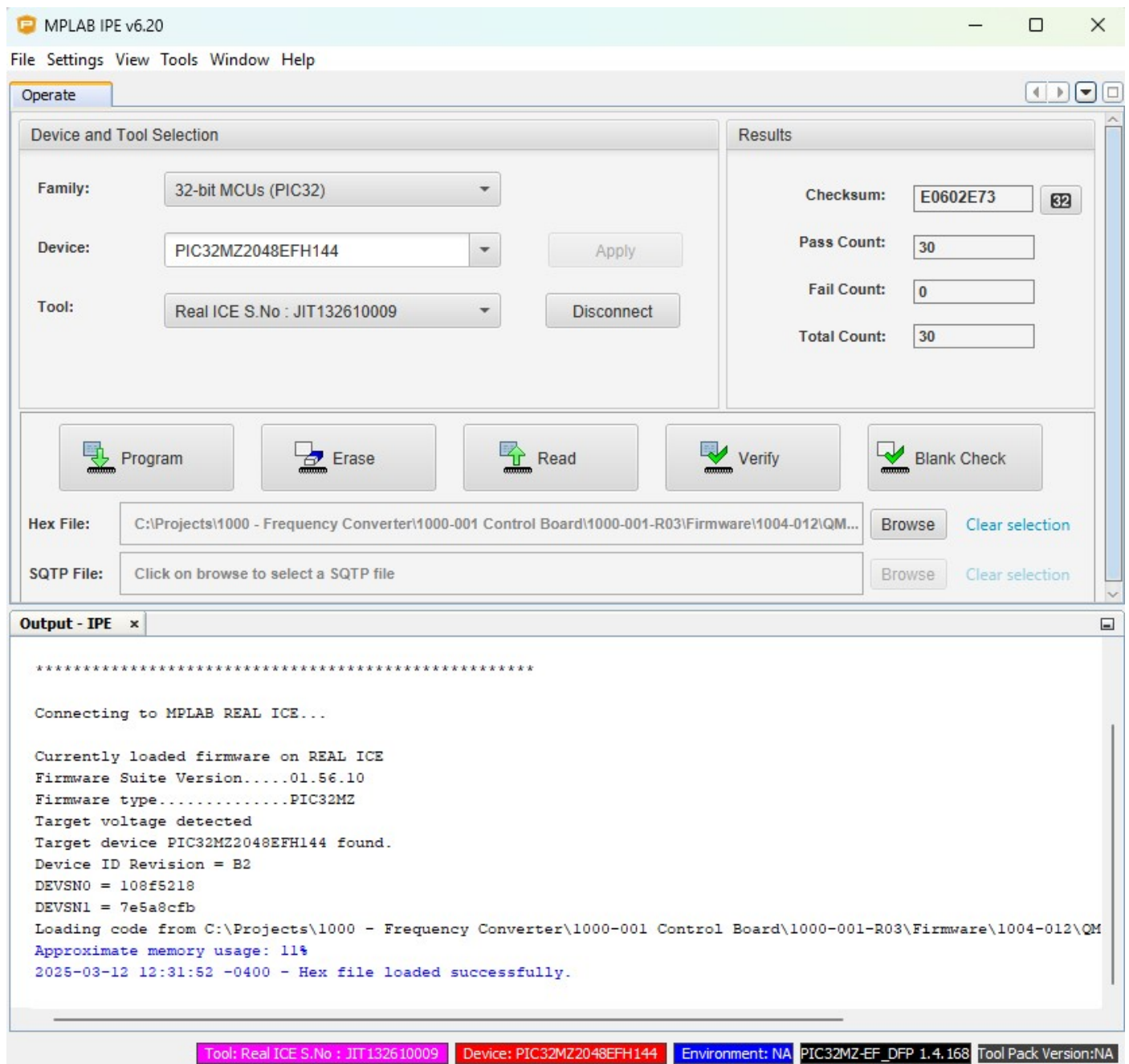


Figure 2.16: IPE Hex File Load

Click the Program button to load the firmware update onto the device. It will take several seconds and you will see "Programming/Verify complete" in the Output window. Close IPE and disconnect the programmer to run the new firmware version, as "Hold In Reset" mode is enabled by default.

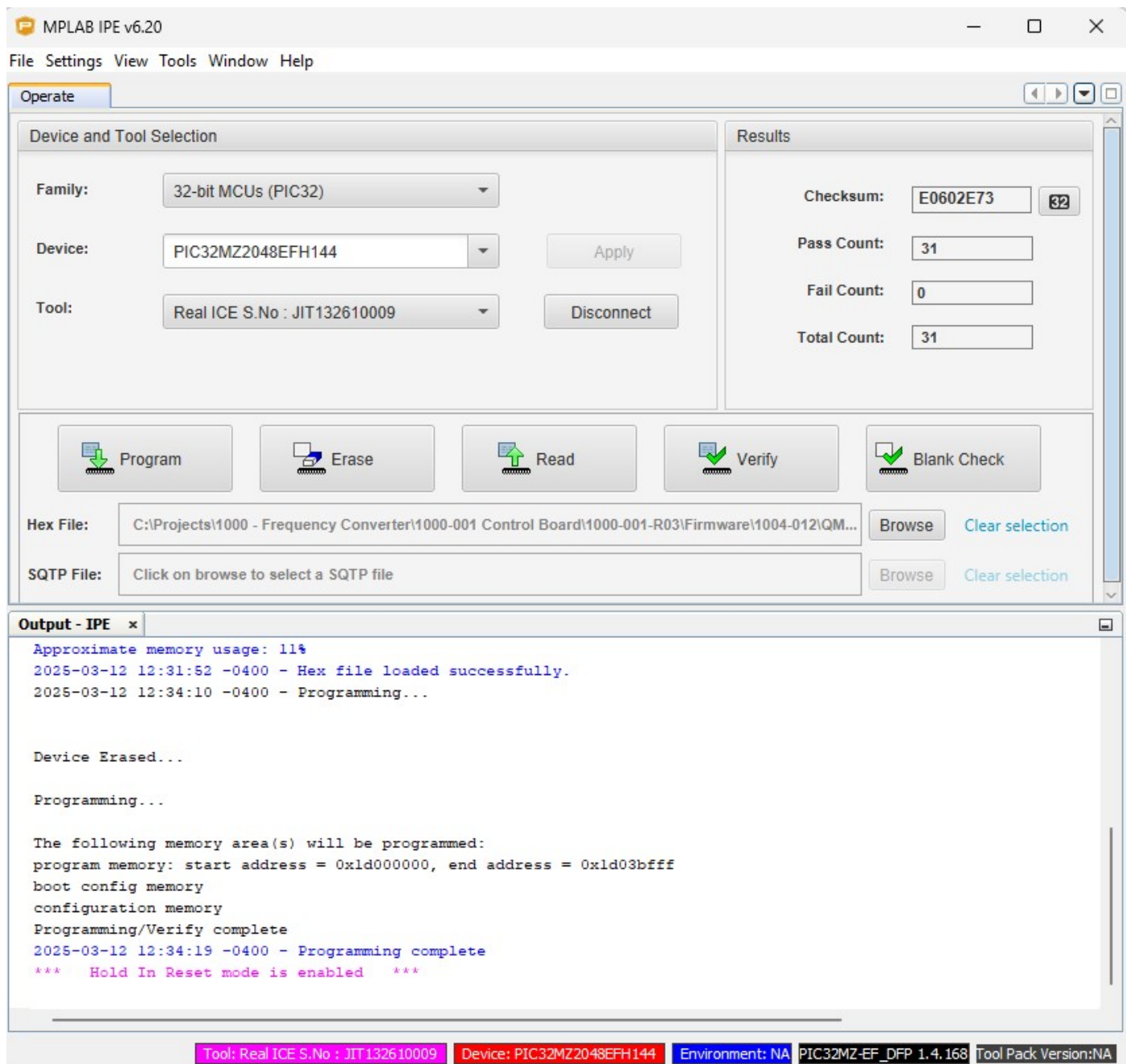


Figure 2.17: IPE Program Complete



3 Remote Operation

In This Chapter

1.	Introduction	27
1.1	USB Configuration	27
1.2	Command Syntax	27
1.2.1	Mnemonic Forms	27
1.2.2	Using a Semicolon(;)	27
1.2.3	Using Whitespace	27
1.2.4	Using "?" Commands	27
1.2.5	Using "*" Commands	27
1.3	Diagram Syntax Conventions	27
1.4	Default Units	28
1.5	Status Reporting	28
1.6	SCPI Data Types	28
1.6.1	<boolean> Definition	28
1.6.2	<character_data> Definition	29
1.6.3	<NAN> Definition	29
1.6.4	<non-decimal numeric> Definition	29
1.6.5	<NRf> Definition	29
1.6.6	<NR1> Definition	29
1.6.7	<NR2> Definition	29
1.6.8	<NR3> Definition	30
1.6.9	<numeric_value> Definition	30
1.6.10	<string> Definition	30
1.7	Input Message Terminators	31
1.8	Compliance Information	31
1.8.1	IEEE-488.2 Compliance	31
1.8.2	USBTMC Compliance	31

1.8.3 VISA Compliance 32

2. VISA Descriptors and Configuration 33

2.1 USBTMC 33

2.1.1 VISA Descriptors 33

2.1.2 USBTMC VISA Code Example 33

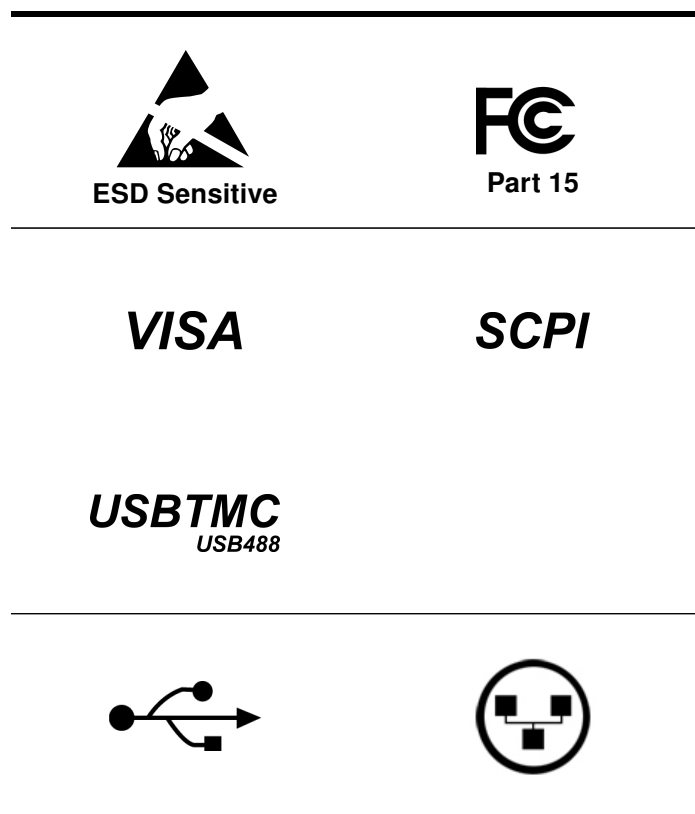
2.2 TCPIP 34

2.2.1 VISA Descriptors 34

2.2.2 VISA Attributes 34

2.2.3 TCPIP VISA Code Example 34

The following markings apply to the QM1004-0.5-18 Combined RF Upconverter/Downconverter family of products.



1. Introduction

1.1 USB Configuration

The Quonset Microwave QM1004-0.5-18 Combined RF Upconverter/Downconverter has been designed to configure as a USBTMC or TCPIP device. No additional drivers are required.

The QM1004-0.5-18 has been designed to be VISA and SCPI compliant and as such, all you need in order to communicate with the Combined RF Upconverter/Downconverter is a VISA library installed on your machine. The QM1004-0.5-18 has been designed using the NI-VISA Runtime Engine, which is included with the GUI.

1.2 Command Syntax

In this manual, the following command syntax conventions are used:

- Square brackets ([]) indicate multiple keywords, one of which must be used
- Bars(|) can be read as "or" and are used to separate parameter options.

1.2.1 Mnemonic Forms

Each keyword has both a long and short form. A standard notation is used to differentiate the short form and long form keyword. The long form of the keyword is shown, with the short form of the keyword shown in uppercase letters and the rest of the keyword is shown in lowercase letters. For example, the short form of *FREQuency* is *FREQ*.

1.2.2 Using a Semicolon(;)

Use a semicolon to separate two commands within the same command string.

1.2.3 Using Whitespace

You *must* use whitespace characters, [tab], or [space] to separate a parameter from a keyword.

1.2.4 Using "?" Commands

The bus controller may send commands at any time, but a SCPI instrument may only send a response when specifically instructed to do so. Only commands that end with a "?", henceforth referred to as queries, instruct the instrument to send a response message. Queries can return either measured values, instrument settings, or internal status codes.

Note: *If you send multiple queries without reading the response between queries, only the result of the last query will be returned when the response is read. The query buffer is a first-in first-out configuration.*

1.2.5 Using "*" Commands

Commands starting with a "*" are called common commands. They are required to perform identical functions for all instruments that are compliant with the IEEE-488.2 interface standard. The "*" commands are used to control reset, self-test, and status operations in the Combined RF Upconverter/Downconverter.

1.3 Diagram Syntax Conventions

- Solid lines represent the recommended path
- Ovals enclose command mnemonics. The command mnemonic must be entered exactly as shown in the oval.
- Dotted lines indicate an optional path for passing secondary or optional keywords.

- Arrows and curved intersections indicate command path direction.
- All diagrams flow from left to right. A path may not travel to the left except in a bypass loop.

1.4 Default Units

Unless otherwise specified, the following units are assumed:

Table 3.2: Default Units

Current	A
Frequency	GHz
Power	dBm
Time	μ s
Temperature	°C
Voltage	Volts

1.5 Status Reporting

Status reporting is used to monitor the Combined RF Upconverter/Downconverter to determine which events have occurred. Status reporting is accomplished by configuring and reading status registers.

The Combined RF Upconverter/Downconverter has the following main registers:

- Status Register
- Standard Event Register
- Operation Status Register
- Questionable Status Register
- Device Status Register

Status and Standard Event registers are read using the IEEE-488.2 common commands.

Operation and Questionable Status registers are read using the SCPI *STAT* subsystem.

1.6 SCPI Data Types

The SCPI language defines different formats for use in program messages and response messages. Instruments are flexible listeners and can accept commands and parameters in various formats. However, SCPI instruments are precise talkers. This means that SCPI instruments *always* responds to a particular query in a predefined, rigid format.

1.6.1 <boolean> Definition

Throughout this document <*boolean*> is used to represent *ON|OFF|<NRf>*. Boolean parameters have a value of *0* or *1* and are unitless. *ON* corresponds to *1* and *OFF* corresponds to *0*.

On input, an <NRf> is rounded to an integer. A nonzero result is interpreted as *1*.

Queries always return a *1* or a *0*, never *ON* or *OFF*.

1.6.2 <character_data> Definition

Throughout this document, <character_data> is used to represent character data, that is, A-Z, a-z, 0-9 and _ (underscore). STOP and A4_U2 are examples of character data. The first character must be alphanumeric, followed by either alphanumeric or underscore characters up to a maximum of 12 characters.

1.6.3 <NAN> Definition

Not a number (NAN) is represented as 9.91 E37. Not a number is defined in IEEE 754.

1.6.4 <non-decimal numeric> Definition

Throughout this document, <non-decimal numeric> is used to represent numeric information in bases other than 10 (that is, hexadecimal, octal, and binary). Examples of non-decimal numeric include #HFF4, #hff4, #Q25, #q25, and #B101011.

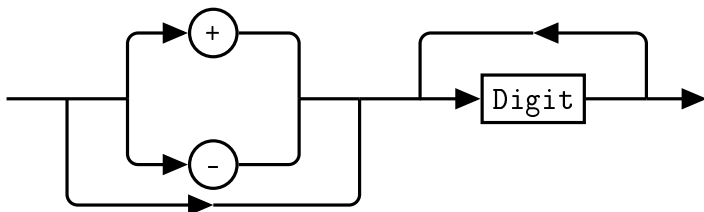
1.6.5 <NRf> Definition

Throughout this document, <NRf> is used to denote a flexible numeric representation. The following show examples of <NRf>

- +185
- -10
- +1.2E09

1.6.6 <NR1> Definition

Throughout this document, <NR1> numeric response data is defined as:

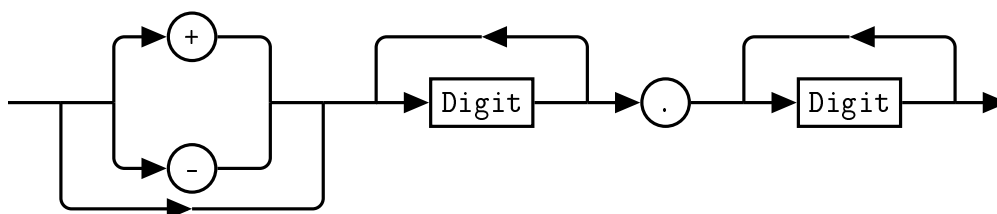


The following shows the examples of <NR1>:

- 127
- +127
- -12345

1.6.7 <NR2> Definition

Throughout this document, <NR2> numeric response data is defined as:

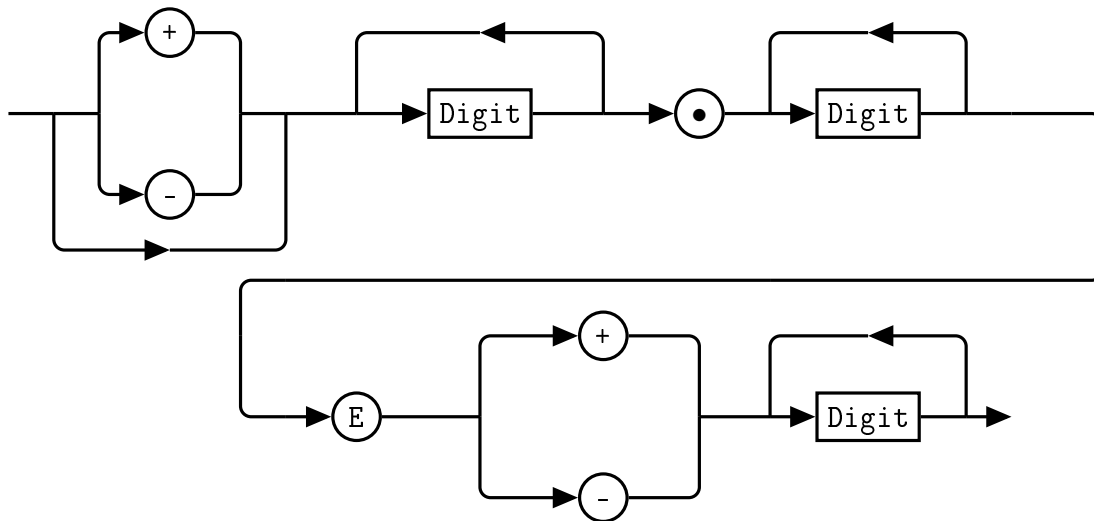


The following shows the examples of <NR2>:

- 12.7
- +127
- -1.2345
- -0.123

1.6.8 <NR3> Definition

Throughout this document, <NR3> numeric response data is defined as:



The following shows the examples of <NR3>:

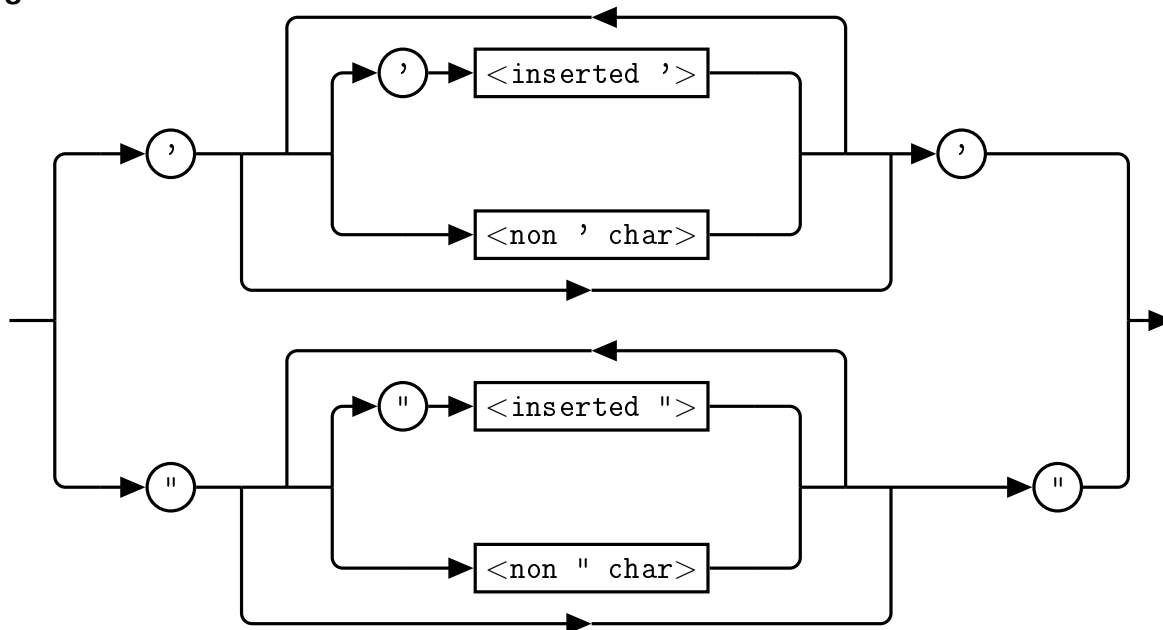
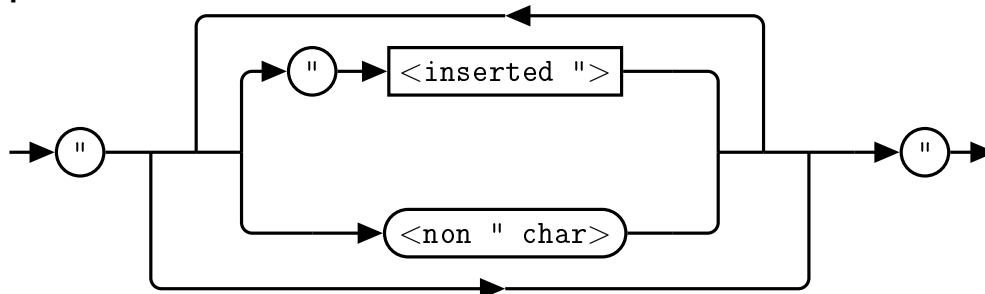
- 1.23E+4
- 12.3E-45

1.6.9 <numeric_value> Definition

Throughout this document, the decimal numeric element is abbreviated to <numeric_value>.

1.6.10 <string> Definition

Throughout this document, <string> is used to represent the 7-bit ASCII characters. The format is defined as:

Program Data**Response Data****1.7 Input Message Terminators**

Program messages sent to a SCPI instrument *must* terminate with a <newline> character. The IEEE.488 EOI (end or identify) signal is interpreted as a <newline> character and may also be used to terminate a message in place of the <newline> character. A <carriage return> followed by a <newline> character is also accepted. Many programming languages allow you to specify a message terminator character or EOI state to be automatically sent with each bus transaction. Message termination *always* sets the current path back to the root-level.

1.8 Compliance Information**1.8.1 IEEE-488.2 Compliance**

The Combined RF Upconverter/Downconverter complies with the rules and regulations of the of the IEEE-488.2 standard which are applicable to USB controlled devices.

1.8.2 USBTMC Compliance

The QM1004-0.5-18 Combined RF Upconverter/Downconverter complies with the rules and regulations of the of the USBTMC (USB Test and Measurement Class). When connected to a USB bus, the QM1004-0.5-18 will configure as a USB Test and Measurement device.

1.8.3 VISA Compliance

The QM1004-0.5-18 Combined RF Upconverter/Downconverter complies with the rules and regulations of the of the VISA (Virtual Instrument Systems Architecture) standard. Communication with the QM1004-0.5-18 is accomplished through VISA libraries, providing portability between different operating systems. *No additional drivers are required.*

2. VISA Descriptors and Configuration

2.1 USBTMC

2.1.1 VISA Descriptors

To communicate with the Quonset Microwave QM1004-0.5-18 Combined RF Upconverter/Downconverter as a USBTMC device, use the following USB VISA descriptor format:

```
USB[board number]::manufacturer ID::model code::serial number::INSTR
```

Descriptor Example

```
USB0::0x2012::0x002B::0203::INSTR
```

2.1.2 USBTMC VISA Code Example

```
ViSession rscmng;  
ViSession qm1004;  
char buf[256] = 0;  
  
viOpenDefaultRM(&rscmng);  
viOpen(rscmng,(ViRsrc)"USB0::0x2012::0x002B::0203::INSTR",VI_NULL,VI_NULL,&qm1004);  
viPrintf(qm1004,(ViString)"*IDN?\n");  
viScanf(qm1004,(ViString)"%t",&buf);  
viClose((ViObject)qm1004);  
viClose((ViObject)rscmng);
```

2.2 TCPIP

2.2.1 VISA Descriptors

To communicate with the Quonset Microwave QM1004-0.5-18 Combined RF Upconverter/Downconverter as a TCP/IP device, use the following TCPIP VISA descriptor format:

```
TCPIP[board number]::IP address::port number::SOCKET
```

Descriptor Example

```
TCPIP0::192.168.2.188::5025::SOCKET
```

2.2.2 VISA Attributes

When using the TCPIP SOCKET connection, the following two VISA Attributes must be set for communication to work properly:

```
VI_ATTR_TERMCHAR  
VI_ATTR_TERMCHAR_EN
```

The QM1004-0.5-18 Combined RF Upconverter/Downconverter uses a newline character ('\n') to indicate end of transmission on query replies and setting these two attributes configures the communicating system to interact properly with the device.

2.2.3 TCPIP VISA Code Example

```
ViSession rscmng;  
ViSession qm1004;  
char buf[256] = 0;  
  
viOpenDefaultRM(&rscmng);  
viOpen(rscmng,(ViRsrc)"TCPIP0::192.168.2.188::5025::SOCKET",VI_NULL,VI_NULL,&qm1004);  
viSetAttribute(qm1004,VI_ATTR_TERMCHAR,'\n');  
viSetAttribute(qm1004,VI_ATTR_TERMCHAR_EN,VI_TRUE);  
viPrintf(qm1004,(ViString)"*IDN?\n");  
viScanf(qm1004,(ViString)"%t",&buf);  
viClose((ViObject)qm1004);  
viClose((ViObject)rscmng);
```



4 Control Commands

In This Chapter

1. Command Quick Reference Guide	38
1.1 Common (*) Commands	38
1.2 EtherNET Subsystem	39
1.3 FREQuency Subsystem	39
1.4 POWEr Subsystem	40
1.5 STATus Subsystem	41
1.6 SYSTem Subsystem	41
2. EtherNET Subsystem Command Reference	42
2.1 EtherNET:DHCP	42
2.2 EtherNET:GATEway	43
2.3 EtherNET:IPADdress	44
2.4 EtherNET:MACaddress	45
2.5 EtherNET:PORT	46
2.6 EtherNET:SUBnet	47
3. FREQuency Subsystem Command Reference	48
3.1 FREQuency:ASR	48
3.2 FREQuency:LOCK	49
3.3 FREQuency:MODE	50
3.4 FREQuency:TUNE	51
3.5 FREQuency:TUNErACTual	52
3.6 FREQuency:CH1:ASR	53
3.7 FREQuency:CH1:MODE	54
3.8 FREQuency:CH2:ASR	55
3.9 FREQuency:CH2:MODE	56
3.10 FREQuency:LO1:EXTernal	57
3.11 FREQuency:LO1:LOCK	58

3.12	FREQuency:LO2:EXTErnal	59
3.13	FREQuency:LO2:LOCK	60
3.14	FREQuency:REFerence:EXTErnal	61
4.	POWEr Subsystem Command Reference	62
4.1	POWEr:AGL	62
4.2	POWEr:LNA	63
4.3	POWEr:RF	64
4.4	POWEr:CH1:AGL	65
4.5	POWEr:CH1:AT1	66
4.6	POWEr:CH1:AT2	67
4.7	POWEr:CH1:LNA	68
4.8	POWEr:CH2:AGL	69
4.9	POWEr:CH2:AT1	70
4.10	POWEr:CH2:AT2	71
4.11	POWEr:CH2:LNA	72
5.	STATUs Subsystem Command Reference	73
5.1	STATUs:OPERation	73
5.2	STATUs:OPERation:CONDition	74
5.3	STATUs:OPERation:ENABle	75
5.4	STATUs:PRESet	76
5.5	STATUs:QUEStionable	77
5.6	STATUs:QUEStionable:CONDition	78
5.7	STATUs:QUEStionable:ENABle	79
6.	SYSTEm Subsystem Command Reference	80
6.1	SYSTEm:BOOTstate	80
6.2	SYSTEm:CURREnt	81
6.3	SYSTEm:ERRor	82
6.4	SYSTEm:FIRMware	86
6.5	SYSTEm:LOADstate	87
6.6	SYSTEm:OPTions	88
6.7	SYSTEm:READstate	89
6.8	SYSTEm:SAVEstate	91
6.9	SYSTEm:SERialNUMber	92
6.10	SYSTEm:USBPID	93
6.11	SYSTEm:VERSion	94
7.	IEEE 488.2 Command Reference	95

7.1	Introduction	95
7.2	*CLS	96
7.3	*ESE <NRf>	97
7.4	*ESR?	98
7.5	*IDN?	99
7.6	*OPC	100
7.7	*RCL <NRf>	101
7.8	*RST	102
7.9	*SAV <NRf>	103
7.10	*SDS <NRf>	104
7.11	*SRE <NRf>	105
7.12	*STB?	106
7.13	*TST?	107
7.14	*WAI	108

1. Command Quick Reference Guide

1.1 Common (*) Commands

Table 4.1: Common (*) Commands Summary

Command	Page	Description
*CLS	96	Clears the data structures. The SCPI registers are cleared.
*ESE <NRf>	97	Sets the Standard Event Status Enable Register.
*ESE?	97	Returns the Standard Event Status Enable Register.
*ESR?	98	Returns the contents of the Standard Event Status Register and then clears it.
*IDN?	99	Returns the identification of the device connected to the computer (Host).
*OPC	100	Causes the Combined RF Upconverter/Downconverter to set the operation complete bit in the Standard Event Status Register when all pending operations have completed.
*OPC?	100	Returns the operation complete bit in the Standard Event Status Register when all pending operations have completed.
*RCL <NRf>	101	Recalls the settings of the Combined RF Upconverter/Downconverter from the specified register (memory location).
*RST	102	Returns the Combined RF Upconverter/Downconverter to its initial power up state.
*SAV <NRf>	103	Saves the settings of the Combined RF Upconverter/Downconverter to the specified register (memory location).
*SDS <NRf>	104	Saves the default settings of the Combined RF Upconverter/Downconverter to the specified register (memory location).
*SRE <NRf>	105	Sets the Service Request Enable register bits.
*SRE?	105	Returns the Service Request Enable register bits.
*STB?	106	Returns the Combined RF Upconverter/Downconverter status byte.
*TST?	107	Performs a self-test and returns the result.
*WAI	108	Causes the Combined RF Upconverter/Downconverter to wait until either all pending commands are complete, the Device Clear command is received, or the power is cycled before executing any subsequent commands or queries.

1.2 EtherNET Subsystem

Table 4.2: EtherNET Subsystem Commands Summary

Command	Page	Description
EtherNET:DHCP	42	Sets or Returns the DHCP setting.
EtherNET:GATEway	43	Sets or Returns the Gateway.
EtherNET:IPADdress	44	Sets or Returns the IP Address.
EtherNET:MACaddress	45	Returns the MAC Address.
EtherNET:PORT	46	Sets or Returns the Port.
EtherNET:SUBnet	47	Sets or Returns the Subnet Mask.

1.3 FREquency Subsystem

Table 4.3: FREquency Subsystem Commands Summary

Command	Page	Description
FREquency:ASR	48	Turns on or off Active Spur Reduction for both channels.
FREquency:LOCK	49	Returns the lock status of the internal LOs.
FREquency:MODE	50	Sets or Returns the operating mode for both channels.
FREquency:TUNE	51	Sets or Returns the desired tuning frequency in GHz.
FREquency:TUNErACTual	52	Returns the actual tuning frequency of the device in GHz. This query is useful when internal frequency rounding occurs in integer mode.
FREquency:CH1:ASR	53	Turns on or off the upconverter's Active Spur Reduction.
FREquency:CH1:MODE	54	Sets or Returns the channel 1 operating mode.
FREquency:CH2:ASR	55	Turns on or off the downconverter's Active Spur Reduction.
FREquency:CH2:MODE	56	Sets or Returns the channel 2 operating mode.
FREquency:LO1:EXTernal	57	Sets or Returns internal/external status of the LO1 oscillator.
FREquency:LO1:LOCK	58	Returns the lock status of the internal LO1s for both channels.
FREquency:LO2:EXTernal	59	Sets or Returns internal/external status of the LO2 oscillator.

FREQuency:LO2:LOCK	60	Returns the lock status of the internal LO2 for the system.
FREQuency:REFerence:EXTernal	61	Sets or Returns whether the internal or external supplied reference oscillator is used.

1.4 POWER Subsystem

Table 4.4: POWER Subsystem Commands Summary

Command	Page	Description
POWER:AGL	62	Turns on or off Active Gain Leveling for both channels.
POWER:LNA	63	Superseded command included for reference only.
POWER:RF	64	Turns on or off the RF output of the device.
POWER:CH1:AGL	65	Turns on or off Active Gain Leveling for Channel 1.
POWER:CH1:AT1	66	Sets or Returns the value of the first Channel 1 attenuator.
POWER:CH1:AT2	67	Sets or Returns the value of the second Channel 1 attenuator.
POWER:CH1:LNA	68	Superseded command included for reference only.
POWER:CH2:AGL	69	Turns on or off Active Gain Leveling for Channel 2.
POWER:CH2:AT1	70	Sets or Returns the value of the first Channel 2 attenuator.
POWER:CH2:AT2	71	Sets or Returns the value of the second Channel 2 attenuator.
POWER:CH2:LNA	72	Superseded command included for reference only.

1.5 STATus Subsystem

Table 4.5: STATus Subsystem Commands Summary

Command	Page	Description
STATus:OPERation	73	Returns the contents of the status event register.
STATus:OPERation:CONDition	74	Returns the contents of the condition register.
STATus:OPERation:ENABle	75	Sets the enable bit mask for the status event register.
STATus:PRESet	76	Presets the STATus:QUEStionable:ENABle register.
STATus:QUEStionable	77	Returns the contents of the questionable register.
STATus:QUEStionable:CONDition	78	Returns the contents of the questionable condition register.
STATus:QUEStionable:ENABle	79	Sets the enable bit mask for the questionable register.

1.6 SYSTem Subsystem

Table 4.6: SYSTem Subsystem Commands Summary

Command	Page	Description
SYSTem:BOOTstate	80	Specifies a state to boot to at device startup.
SYSTem:CURRent	81	Returns the current draw of the device.
SYSTem:ERRor	82	Returns error numbers and messages from the error queue.
SYSTem:FIRMware	86	Returns the current firmware version of the device.
SYSTem:LOADstate	87	Loads and sets the parameters from the specified state.
SYSTem:OPTions	88	Returns the configured options of the device.
SYSTem:READstate	89	Reads the parameters from the stored state without changing the current device setup.
SYSTem:SAVEstate	91	Saves the current parameters to a specified state number.
SYSTem:SERialNUMBER	92	Returns the serial number of the device.
SYSTem:USBPID	93	Returns the USB PID of the device.
SYSTem:VERSion	94	Returns the version of SCPI implemented in the Combined RF Upconverter/Downconverter.

2. EtherNET Subsystem Command Reference

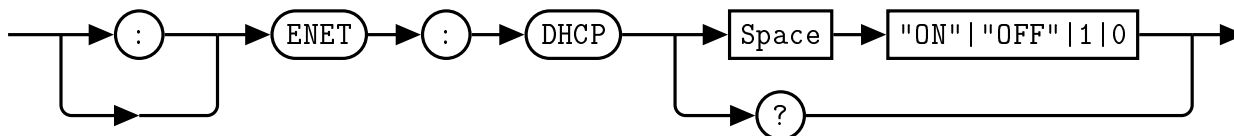
2.1 EtherNET:DHCP [ON|OFF|1|0]

This command allows the user to turn on and off DHCP for the Combined RF Upconverter/Downconverter.

When *0* or *OFF* is specified, the DHCP is turned off.

When *1* or *ON* is specified, the DHCP is turned on.

Syntax



Example

:ENET:DHCP 0 *This command turns off DHCP.*

Default Condition

On power up, or when a **RST* command is issued, the QM1004-0.5-18 returns to the boot state's setting. The Combined RF Upconverter/Downconverter default setting is 1.

Query

:ENET:DHCP? *This query returns the system's current DHCP setting.*

- *0* is returned if DHCP is *OFF*
- *1* is returned if DHCP is *ON*

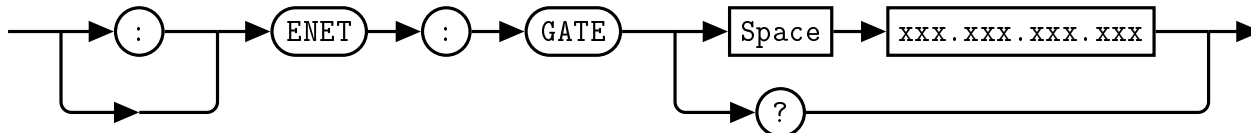
Error Message

If the parameter is not in the recognized format, error *-102*, "Syntax error" occurs.

2.2 EtherNET:GATEway <ipString>

This command sets the Gateway of the Combined RF Upconverter/Downconverter.

Syntax



Example

:ENET:GATE 192.168.2.1 *This command sets the Gateway to 192.168.2.1*

Default Condition

On startup, the Gateway defaults to the previously programmed value. The default Gateway is 0.0.0.0 and must be set by the user or DHCP.

Query

:ENET:GATE? *This query returns the system's current Gateway.*

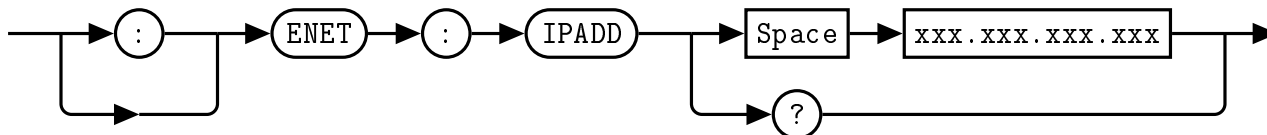
Error Message

If the ipString is not in the recognized format (dotted decimal notation), error -102, "Syntax error" occurs.

2.3 EtherNET:IPADdress <ipString>

This command sets the IP Address of the Combined RF Upconverter/Downconverter.

Syntax



Example

:ENET:IPADD 192.168.2.188 *This command sets the IP address to 192.168.2.188*

Default Condition

On startup, the IP Address defaults to the previously programmed value. The default IP Address is 0.0.0.0 and must be set by the user or DHCP.

Query

:ENET:IPADD? *This query returns the system's current IP Address.*

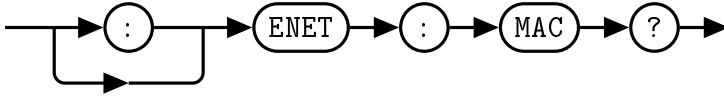
Error Message

If the ipString is not in the recognized format (dotted decimal notation), error -102, "Syntax error" occurs.

2.4 EtherNET:MACaddress <ipString>

This query returns the MAC Address of the Combined RF Upconverter/Downconverter.

Syntax



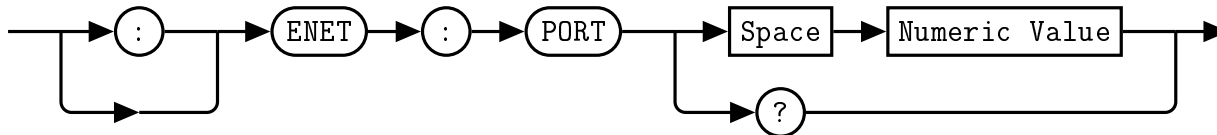
Query

:ENET:MAC? *This query returns the system's MAC Address.*

2.5 EtherNET:PORT <numeric value>

This command sets the TCP/IP Port of the Combined RF Upconverter/Downconverter.

Syntax



Example

:ENET:PORT 5025 *This command sets the port number to 5025*

Default Condition

On startup, the Port number defaults to the previously programmed value. The default Port number is 5025.

Query

:ENET:PORT? *This query returns the Combined RF Upconverter/Downconverter's current Port number.*

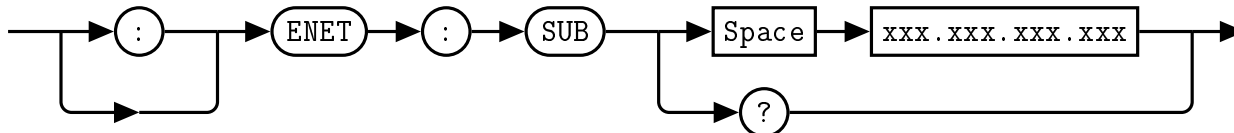
Error Message

If the parameter is not in the recognized format, error -102, "Syntax error" occurs.

2.6 EtherNET:SUBnet <ipString>

This command sets the Subnet Mask of the Combined RF Upconverter/Downconverter.

Syntax



Example

:ENET:SUB 255.255.255.0 *This command sets the Subnet Mask to 255.255.255.0*

Default Condition

On startup, the Subnet Mask defaults to the previously programmed value. The default Subnet Mask is 0.0.0.0 and must be set by the user or DHCP.

Query

:ENET:SUB? *This query returns the system's current Subnet Mask.*

Error Message

If the ipString is not in the recognized format (dotted decimal notation), error -102, "Syntax error" occurs.

3. FREQuency Subsystem Command Reference

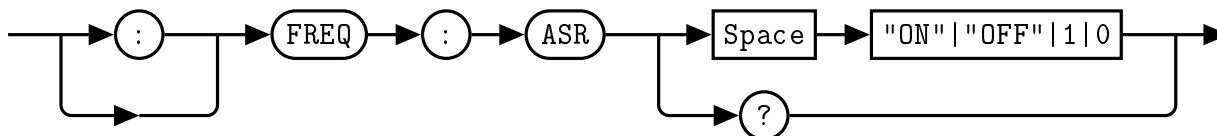
3.1 FREQuency:ASR[ON|OFF|1|0]

This command turns the both channels' Active Spur Reduction on or off.

When *0* or *OFF* is specified, ASR is turned off.

When *1* or *ON* is specified, ASR is turned on.

Syntax



Example

:FREQ:ASR 1 *This command turns both channels' ASR on.*

Default Condition

On power up, or when a **RST* command is issued, the QM1004-0.5-18 returns to the boot state's setting. The Combined RF Upconverter/Downconverter default setting is 1.

Query

:FREQ:ASR? *This query returns the state of the ASR settings.*

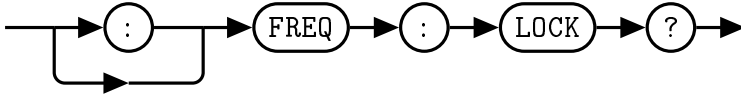
Error Message

If the parameter is not in the recognized format, error *-102*, "Syntax error" occurs.

3.2 FREQuency:LOCK

This query allows the user to check the lock status of the internal LOs to the reference signal.

Syntax



Query

:FREQ:LOCK? *This query returns the lock status of the internal LOs. A lock status of 0 indicates that the LOs are unlocked, while a lock status of 1 indicates the LOs are locked.*

3.3 FREQuency:MODE <numeric value>

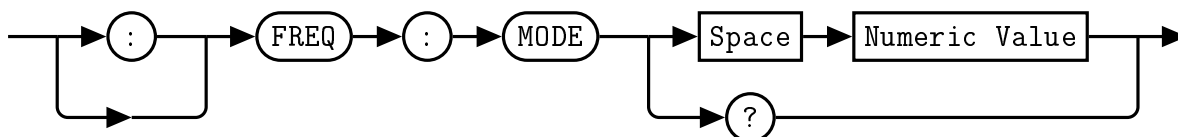
This command allows the user to set the converter mode of the QM1004-0.5-18 for both channels. The mode setting controls the converter bypass, the input amp, and the output amp. The range of acceptable mode values is 0-4 and are described as follows:

Table 4.7: Converter Operation Modes

Converter Mode	Converter Status	Input Amplifier	Output Amplifier
0	Bypassed	Off	Off
1	Enabled	Off	Off
2	Enabled	Off	On
3	Enabled	On	Off
4	Enabled	On	On
5	Terminated	N/A	N/A

Note: Channel 1 does not currently have a switchable output amplifier. Modes 1 and 2 currently have the same effect on channel 1, as do 3 and 4. A future hardware update will likely contain a switchable upconverter output power amplifier.

Syntax



Example

:FREQ:MODE 1

This command sets the converter mode of the QM1004-0.5-18 to 1, which enables the converter, and disables both the input and output amplifiers.

Default Condition

On power up, or when a *RST command is issued, the QM1004-0.5-18 returns to the boot state's setting. The Combined RF Upconverter/Downconverter default setting is 1.

Query

:FREQ:MODE? *This query returns the converter mode of the QM1004-0.5-18.*

Error Message

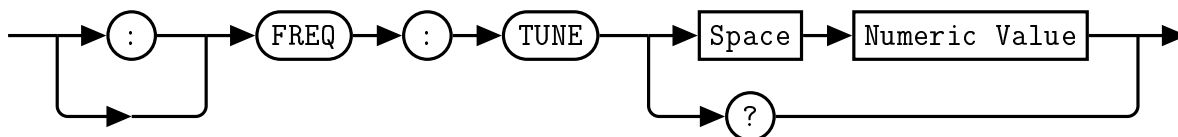
If the parameter is not in the recognized format, error -102, "Syntax error" occurs.

If the parameter is less than 0 or greater than 4, error -222, "Data out of range" occurs.

3.4 FREQuency:TUNE <numeric value>

This command allows the user to set the tuner frequency of the QM1004-0.5-18. The frequency value is specified in GHz. The range of acceptable tune frequency values is 0.5-18 GHz with a 4 decimal place (100 kHz) tuning resolution.

Syntax



Example

:FREQ:TUNE 9.25 *This command sets the center frequency of the QM1004-0.5-18 to 9.25 GHz.*

Default Condition

On power up, or when a *RST command is issued, the QM1004-0.5-18 returns to the boot state's setting. The Combined RF Upconverter/Downconverter default setting is 9.25.

Query

:FREQ:TUNE? *This query returns the center frequency of the QM1004-0.5-18 in GHz.*

Error Message

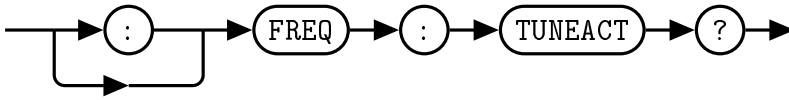
If the parameter is not in the recognized format, error -102, "Syntax error" occurs.

If the parameter is not between 0.5 and 18, error -222, "Data out of range" occurs.

3.5 FREQuency:TUNErACTual

This query returns the actual tuner frequency of the QM1004-0.5-18 in GHz. This can be different than the set frequency if a set frequency finer than the tuning resolution is entered.

Syntax



Query

:FREQ:TUNEACT? *This query returns the actual tuner frequency of the QM1004-0.5-18 in GHz.*

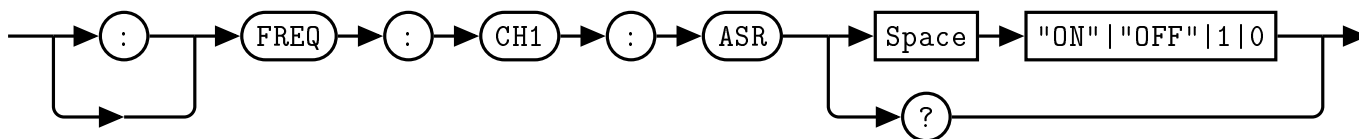
3.6 FREQuency:CH1:ASR[ON|OFF|1|0]

This command turns the Active Spur Reduction on or off for Channel 1.

When *0* or *OFF* is specified, Channel 1's ASR is turned off.

When *1* or *ON* is specified, Channel 1's ASR is turned on.

Syntax



Example

:FREQ:CH1:ASR 1 *This command turns the Channel 1's ASR on.*

Default Condition

On power up, or when a **RST* command is issued, the QM1004-0.5-18 returns to the boot state's setting. The Combined RF Upconverter/Downconverter default setting is 1.

Query

:FREQ:CH1:ASR? *This query returns the state of Channel 1's ASR setting.*

Error Message

If the parameter is not in the recognized format, error *-102*, "Syntax error" occurs.

3.7 FREQuency:CH1:MODE <numeric value>

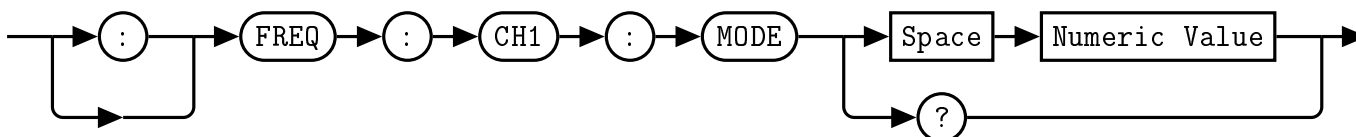
This command allows the user to set the converter mode of the QM1004-0.5-18 for Channel 1. The mode setting controls the converter bypass, the input amp, and the output amp. The range of acceptable mode values is 0-4 and are described as follows:

Table 4.8: Converter Operation Modes

Converter Mode	Converter Status	Input Amplifier	Output Amplifier
0	Bypassed	Off	Off
1	Enabled	Off	Off
2	Enabled	Off	On
3	Enabled	On	Off
4	Enabled	On	On
5	Terminated	N/A	N/A

Note: Channel 1 does not currently have a switchable output amplifier. Modes 1 and 2 currently have the same effect on channel 1, as do 3 and 4. A future hardware update will likely contain a switchable upconverter output power amplifier.

Syntax



Example

`:FREQ:CH1:MODE 1` *This command sets the Channel 1 converter mode of the QM1004-0.5-18 to 1, which enables the converter, and disables both the input and output amplifiers.*

Default Condition

On power up, or when a **RST* command is issued, the QM1004-0.5-18 returns to the boot state's setting. The Combined RF Upconverter/Downconverter default setting is 1.

Query

This query returns the Channel 1 converter mode of the QM1004-0.5-18.

Error Message

If the parameter is not in the recognized format, error -102, "Syntax error" occurs.
 If the parameter is less than 0 or greater than 4, error -222, "Data out of range" occurs.

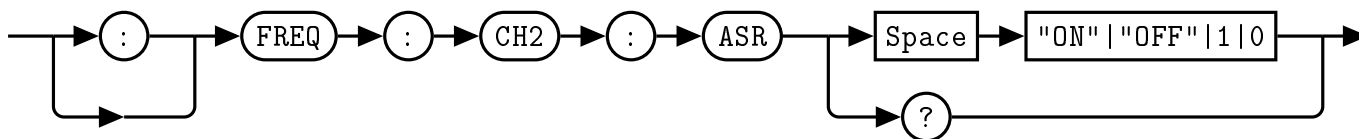
3.8 FREQuency:CH2:ASR[ON|OFF|1|0]

This command turns the Active Spur Reduction on or off for Channel 2.

When *0* or *OFF* is specified, Channel 2's ASR is turned off.

When *1* or *ON* is specified, Channel 2's ASR is turned on.

Syntax



Example

:FREQ:CH2:ASR 1 *This command turns the Channel 2's ASR on.*

Default Condition

On power up, or when a **RST* command is issued, the QM1004-0.5-18 returns to the boot state's setting. The Combined RF Upconverter/Downconverter default setting is 1.

Query

:FREQ:CH2:ASR? *This query returns the state of Channel 2's ASR setting.*

Error Message

If the parameter is not in the recognized format, error *-102*, "Syntax error" occurs.

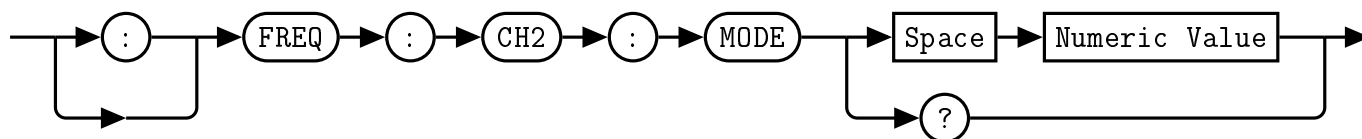
3.9 FREQuency:CH2:MODE <numeric value>

This command allows the user to set the converter mode of the QM1004-0.5-18 for Channel 2. The mode setting controls the converter bypass, the input amp, and the output amp. The range of acceptable mode values is 0-4 and are described as follows:

Table 4.9: Converter Operation Modes

Converter Mode	Converter Status	Input Amplifier	Output Amplifier
0	Bypassed	Off	Off
1	Enabled	Off	Off
2	Enabled	Off	On
3	Enabled	On	Off
4	Enabled	On	On
5	Terminated	N/A	N/A

Syntax



Example

`:FREQ:CH2:MODE 1` *This command sets the Channel 2 converter mode of the QM1004-0.5-18 to 1, which enables the converter, and disables both the input and output amplifiers.*

Default Condition

On power up, or when a **RST* command is issued, the QM1004-0.5-18 returns to the boot state's setting. The Combined RF Upconverter/Downconverter default setting is 1.

Query

This query returns the Channel 2 converter mode of the QM1004-0.5-18.

Error Message

If the parameter is not in the recognized format, error *-102*, "Syntax error" occurs.

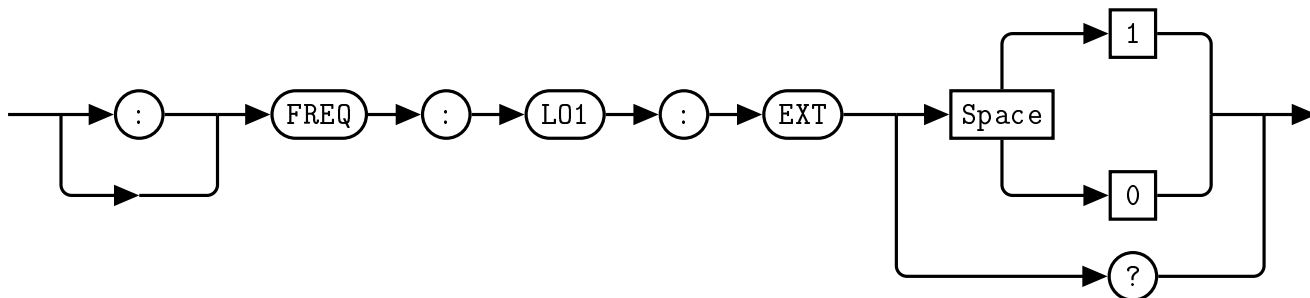
If the parameter is less than 0 or greater than 4, error *-222*, "Data out of range" occurs.

3.10 FREQuency:LO1:EXTernal [1|0]

This command allows the user to select between the internal LO1 local oscillator and an externally supplied one.

When *0* is specified, the internal LO1 local oscillator is used by the Combined RF Upconverter/Downconverter. When *1* is specified, the external LO1 input is used by the Combined RF Upconverter/Downconverter.

Syntax



Example

:FREQ:LO1:EXT 0 *This command selects the internal LO1 oscillator.*

Default Condition

On power up, or when a **RST* command is issued, the QM1004-0.5-18 returns to the boot state's setting. The Combined RF Upconverter/Downconverter default setting is 0.

Query

:FREQ:LO1:EXT? *This query returns a 0 or 1 to indicate the selected Combined RF Upconverter/Downconverter reference mode*

- 0 is returned if the internal LO1 oscillator is selected
- 1 is returned if the external LO1 is selected

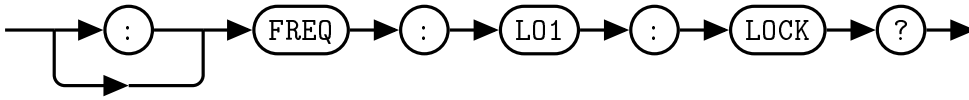
Error Message

If the parameter is not in the recognized format, error *-102*, "Syntax error" occurs.
If the parameter is not 1 or 0, error *-222*, "Data out of range" occurs.

3.11 FREQuency:LO1:LOCK

This query allows the user to check the lock status of the internal LO1 to the reference signal for the Combined RF Upconverter/Downconverter.

Syntax



Query

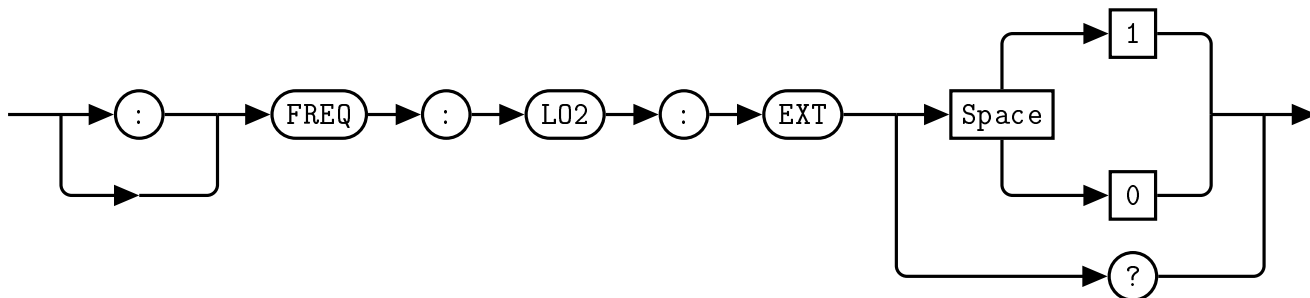
:FREQ:LO1:LOCK? *This query returns the lock status of the internal LO1. A lock status of 0 indicates that the LO1 is unlocked, while a lock status of 1 indicates the LO1 is locked.*

3.12 FREQuency:LO2:EXTernal [1|0]

This command allows the user to select between the internal LO2 local oscillator and an externally supplied one.

When *0* is specified, the internal LO2 local oscillator is used by the Combined RF Upconverter/Downconverter. When *1* is specified, the external LO2 input is used by the Combined RF Upconverter/Downconverter.

Syntax



Example

:FREQ:LO2:EXT 0 *This command selects the internal LO2 oscillator.*

Default Condition

On power up, or when a *RST command is issued, the QM1004-0.5-18 returns to the boot state's setting. The Combined RF Upconverter/Downconverter default setting is 0.

Query

:FREQ:LO2:EXT? *This query returns a 0 or 1 to indicate the selected Combined RF Upconverter/Downconverter reference mode*

- 0 is returned if the internal LO2 oscillator is selected
- 1 is returned if the external LO2 is selected

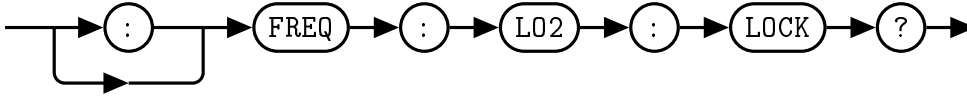
Error Message

If the parameter is not in the recognized format, error -102, "Syntax error" occurs.
If the parameter is not 1 or 0, error -222, "Data out of range" occurs.

3.13 FREQuency:LO2:LOCK

This query allows the user to check the lock status of the internal LO2 to the reference signal.

Syntax



Query

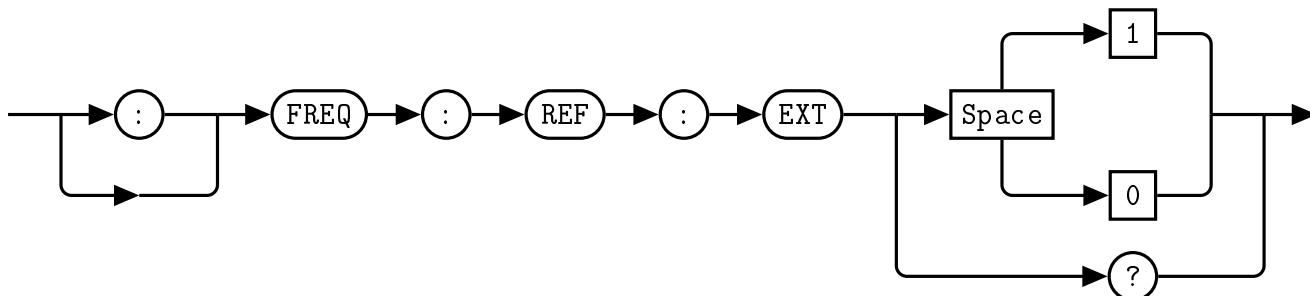
:FREQ:LO2:LOCK? *This query returns the lock status of the internal LO2. A lock status of 0 indicates that the LO2 is unlocked, while a lock status of 1 indicates the LO2 is locked.*

3.14 FREQuency:REFerence:EXTernal [1|0]

This command allows the user to select between the internal 10 MHz reference and an externally supplied reference.

When *0* is specified, the internal reference oscillator is used by the Combined RF Upconverter/Downconverter. When *1* is specified, the external reference input is used by the Combined RF Upconverter/Downconverter.

Syntax



Example

:FREQ:REF:EXT 0 *This command selects the internal reference oscillator.*

Default Condition

On power up, or when a **RST* command is issued, the QM1004-0.5-18 returns to the boot state's setting. The Combined RF Upconverter/Downconverter default setting is 0.

Query

:FREQ:REF:EXT? *This query returns a 0 or 1 to indicate the selected Combined RF Upconverter/Downconverter reference mode*

- 0 is returned if the internal reference oscillator is selected
- 1 is returned if the external reference is selected

Error Message

If the parameter is not in the recognized format, error *-102*, "Syntax error" occurs.
If the parameter is not 1 or 0, error *-222*, "Data out of range" occurs.

4. POWER Subsystem Command Reference

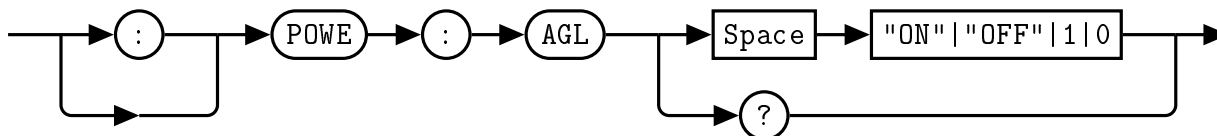
4.1 POWER:AGL[ON|OFF|1|0]

This command turns the system's Active Gain Leveling on or off.

When *0* or *OFF* is specified, AGL is turned off.

When *1* or *ON* is specified, AGL is turned on.

Syntax



Example

:POWE:AGL 1 *This command turns AGL on.*

Default Condition

On power up, or when a **RST* command is issued, the QM1004-0.5-18 returns to the boot state's setting. The Combined RF Upconverter/Downconverter default setting is 0.

Query

:POWE:AGL? *This query returns the state of the AGL settings.*

Error Message

If the parameter is not in the recognized format, error *-102*, "Syntax error" occurs.

4.2 POWER:LNA[ON|OFF|1|0]

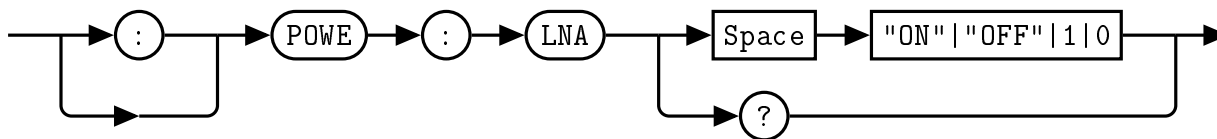
Note: This command has been superseded by **FREQ:CH1:MODE** and has been removed from R02 hardware. It is contained in this manual for reference only.

This command turns the IF amplifier in both channels on or off.

When *0* or *OFF* is specified, the LNA is turned off.

When *1* or *ON* is specified, the LNA is turned on.

Syntax



Example

:POWE:LNA 0 *This command turns off the LNA.*

Default Condition

On power up, or when a **RST* command is issued, the QM1004-0.5-18 returns to the boot state's setting. The Combined RF Upconverter/Downconverter default setting is 0.

Query

:POWE:LNA? *This query returns a 0 or 1 to indicated the Combined RF Upconverter/Downconverter LNA power state.*

- 0 is returned if the LNA is *OFF*
- 1 is returned if the LNA is *ON*

Error Message

If the parameter is not in the recognized format, error -102, "Syntax error" occurs.

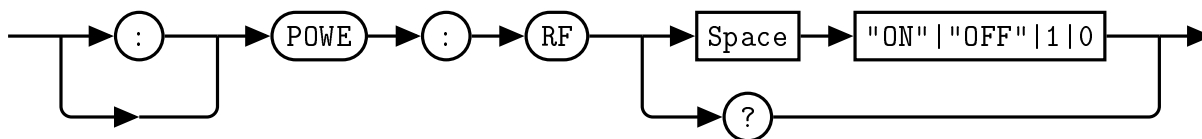
4.3 POWER:RF [ON|OFF|1|0]

This command allows the user to turn on and off the LOs' RF power of the QM1004-0.5-18.

When *0* or *OFF* is specified, the RF power is turned off.

When *1* or *ON* is specified, the RF power is turned on.

Syntax



Example

`:POWE:RF 0` *This command turns off the RF power.*

Default Condition

On power up, or when a **RST* command is issued, the QM1004-0.5-18 returns to the boot state's setting. The Combined RF Upconverter/Downconverter default setting is 0.

Query

`:POWE:RF?` *This query returns a 0 or 1 to indicated the Combined RF Upconverter/Downconverter power state.*

- 0 is returned if the RF power is *OFF*
- 1 is returned if the RF power is *ON*

Error Message

If the parameter is not in the recognized format, error *-102*, "*Syntax error*" occurs.

4.4 POWER:CH1:AGL[ON|OFF|1|0]

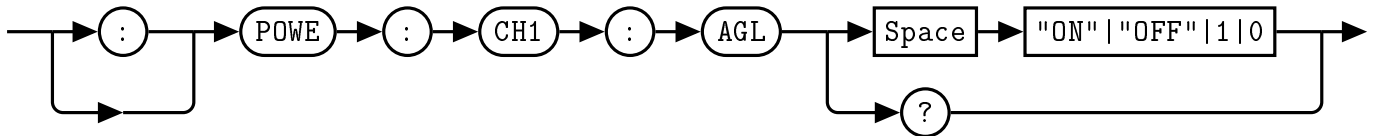
Note: This command has been introduced in R04 hardware and is not available in previous revisions.

This command turns the Channel 1 Active Gain Leveling on or off.

When *0* or *OFF* is specified, AGL is turned off.

When *1* or *ON* is specified, AGL is turned on.

Syntax



Example

:POWE:CH1:AGL 1 *This command turns Channel 1 AGL on.*

Default Condition

On power up, or when a **RST* command is issued, the QM1004-0.5-18 Channel 1 returns to the boot state's setting. The Combined RF Upconverter/Downconverter default setting is 0.

Query

:POWE:CH1:AGL? *This query returns the state of the Channel 1 AGL settings.*

Error Message

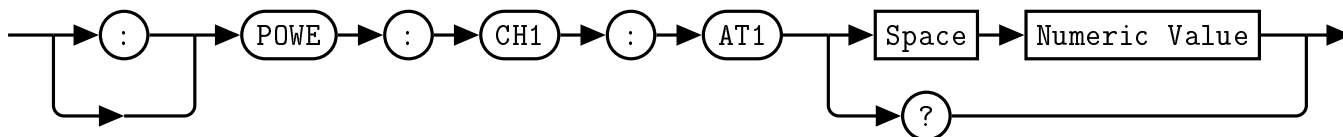
If the parameter is not in the recognized format, error *-102*, "Syntax error" occurs.

4.5 POWER:CH1:AT1 <numeric value>

This command allows the user to set the RF attenuation level of the QM1004-0.5-18 Channel 1 Attenuator 1 to a specified numeric value. The range of acceptable attenuation values is 0 - 31.5 dB in 0.5 dB steps.

Note: R00 hardware Channel 1 Attenuator 1 range was 0 - 31 dB in 1 dB steps.

Syntax



Example

:POWE:CH1:AT1 31.5 *This command sets the Channel 1 Attenuator 1 to 31.5 dB*

Default Condition

On power up, or when a *RST command is issued, the QM1004-0.5-18 Channel 1 Attenuator 1 level returns to the boot state's setting. The Combined RF Upconverter/Downconverter default setting is 0.

Query

:POWE:CH1:AT1? *This query returns the current level of the Channel 1 Attenuator 1.*

Error Message

If the parameter is not in the recognized format, error -102, "Syntax error" occurs.

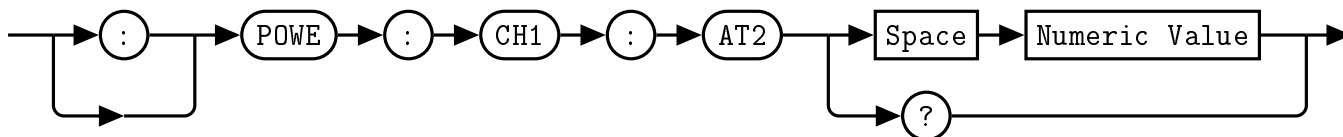
If the parameter is less than 0 or greater than 31.5, error -222, "Data out of range" occurs.

4.6 POWER:CH1:AT2 <numeric value>

This command allows the user to set the RF attenuation level of the QM1004-0.5-18 Channel 1 Attenuator 2 to a specified numeric value. The range of acceptable attenuation values is 0 - 31.5 dB in 0.5 dB steps.

Note: R00 hardware Channel 1 Attenuator 2 range was 0 - 31 dB in 1 dB steps.

Syntax



Example

:POWE:CH1:AT2 31.5 *This command sets the Channel 1 Attenuator 2 to 31.5 dB*

Default Condition

On power up, or when a **RST* command is issued, the QM1004-0.5-18 Channel 1 Attenuator 2 level returns to the boot state's setting. The Combined RF Upconverter/Downconverter default setting is 0.

Query

:POWE:CH1:AT2? *This query returns the current level of the Channel 1 Attenuator 2.*

Error Message

If the parameter is not in the recognized format, error -102, "Syntax error" occurs.

If the parameter is less than 0 or greater than 31.5, error -222, "Data out of range" occurs.

4.7 POWER:CH1:LNA[ON|OFF|1|0]

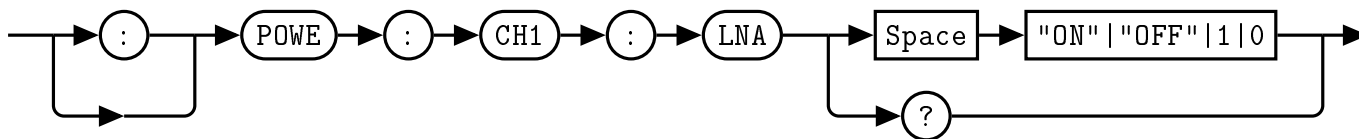
Note: This command has been superseded by `FREQ:CH1:MODE` and has been removed from R02 hardware. It is contained in this manual for reference only.

This command turns the upconverter LNA on or off.

When `0` or `OFF` is specified, the LNA is turned off.

When `1` or `ON` is specified, the LNA is turned on.

Syntax



Example

`:POWE:CH1:LNA 0` This command turns off the LNA.

Default Condition

On power up, or when a `*RST` command is issued, the QM1004-0.5-18 returns to the boot state's setting. The Combined RF Upconverter/Downconverter default setting is `0`.

Query

`:POWE:CH1:LNA?` This query returns a `0` or `1` to indicate the Combined RF Upconverter/Downconverter LNA power state.

Error Message

If the parameter is not in the recognized format, error `-102`, "Syntax error" occurs.

4.8 POWER:CH2:AGL[ON|OFF|1|0]

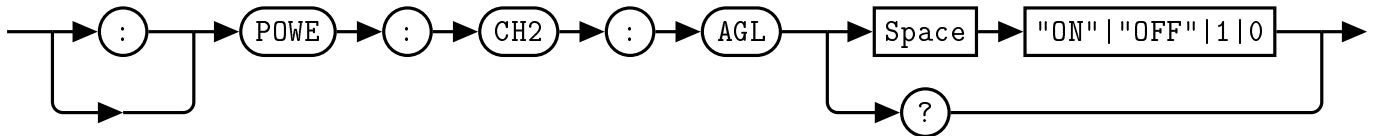
Note: This command has been introduced in R04 hardware and is not available in previous revisions.

This command turns the Channel 2 Active Gain Leveling on or off.

When *0* or *OFF* is specified, AGL is turned off.

When *1* or *ON* is specified, AGL is turned on.

Syntax



Example

:POWER:CH2:AGL 1 *This command turns Channel 2 AGL on.*

Default Condition

On power up, or when a **RST* command is issued, the QM1004-0.5-18 Channel 2 returns to the boot state's setting. The Combined RF Upconverter/Downconverter default setting is 0.

Query

:POWER:CH2:AGL? *This query returns the state of the Channel 2 AGL settings.*

Error Message

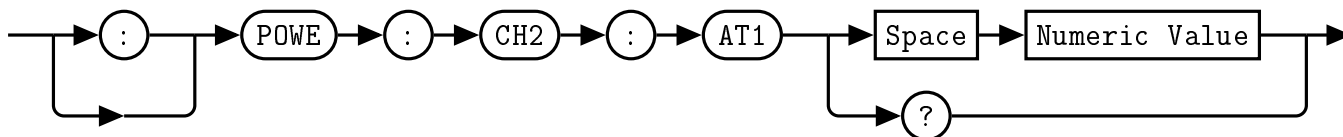
If the parameter is not in the recognized format, error -102, "Syntax error" occurs.

4.9 POWER:CH2:AT1 <numeric value>

This command allows the user to set the RF attenuation level of the QM1004-0.5-18 Channel 2 Attenuator 1 to a specified numeric value. The range of acceptable attenuation values is 0 - 31.5 dB in 0.5 dB steps.

Note: R00 hardware Channel 2 Attenuator 1 range was 0 - 31 dB in 1 dB steps.

Syntax



Example

:POWE:CH2:AT1 31.5 *This command sets the Channel 2 Attenuator 1 to 31.5 dB*

Default Condition

On power up, or when a *RST command is issued, the QM1004-0.5-18 Channel 2 Attenuator 1 level returns to the boot state's setting. The Combined RF Upconverter/Downconverter default setting is 0.

Query

:POWE:CH2:AT1? *This query returns the current level of the Channel 2 Attenuator 1.*

Error Message

If the parameter is not in the recognized format, error -102, "Syntax error" occurs.

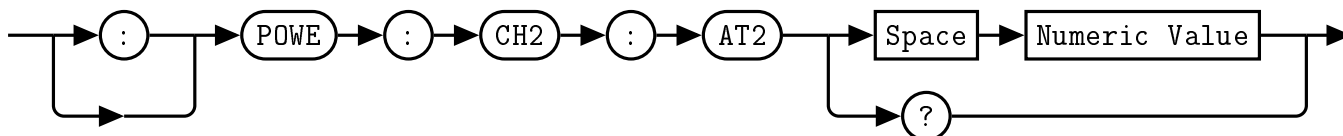
If the parameter is less than 0 or greater than 31.5, error -222, "Data out of range" occurs.

4.10 POWER:CH2:AT2 <numeric value>

This command allows the user to set the RF attenuation level of the QM1004-0.5-18 Channel 2 Attenuator 2 to a specified numeric value. The range of acceptable attenuation values is 0 - 31.5 dB in 0.5 dB steps.

Note: R00 hardware did not have a Channel 2 Attenuator 2.

Syntax



Example

:POWE:CH2:AT2 31.5 *This command sets the Channel 2 Attenuator 2 to 31.5 dB*

Default Condition

On power up, or when a **RST* command is issued, the QM1004-0.5-18 Channel 2 Attenuator 2 level returns to the boot state's setting. The Combined RF Upconverter/Downconverter default setting is 0.

Query

:POWE:CH2:AT2? *This query returns the current level of the Channel 2 Attenuator 2.*

Error Message

If the parameter is not in the recognized format, error -102, "Syntax error" occurs.

If the parameter is less than 0 or greater than 31.5, error -222, "Data out of range" occurs.

4.11 POWER:CH2:LNA[ON|OFF|1|0]

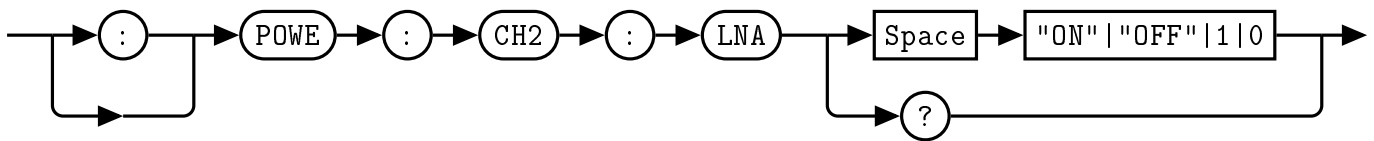
Note: This command has been superseded by `FREQ:CH1:MODE` and has been removed from R02 hardware. It is contained in this manual for reference only.

This command turns the downconverter IF output amplifier on or off.

When `0` or `OFF` is specified, the IF output amp is turned off.

When `1` or `ON` is specified, the IF output amp is turned on.

Syntax



Example

`:POWE:CH2:LNA 0` This command turns off the IF output amp.

Default Condition

On power up, or when a `*RST` command is issued, the QM1004-0.5-18 returns to the boot state's setting. The Combined RF Upconverter/Downconverter default setting is `0`.

Query

`:POWE:CH2:LNA?` This query returns a `0` or `1` to indicate the Combined RF Upconverter/Downconverter IF output amp power state.

Error Message

If the parameter is not in the recognized format, error `-102`, "Syntax error" occurs.

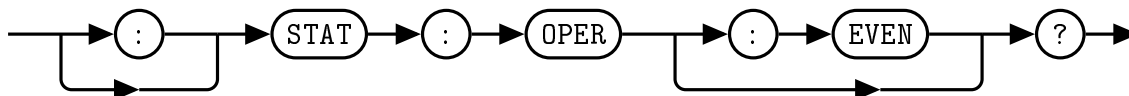
5. STATus Subsystem Command Reference

5.1 STATus:OPERation?

This query returns the contents of the status event register. Reading from this event register clears it.

The use of the :EVENT token is optional.

Syntax



Allowed Values

The *NRf* parameter can be any integer in the range of 0 to 32767.

Query

:STAT:OPER? *The status event register is queried.*

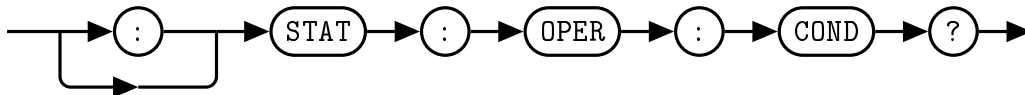
Reset Condition

On reset, the status event register is cleared.

5.2 STATus:OPERation:CONDition?

This query returns the contents of the condition register.

Syntax



Allowed Values

The *NRf* parameter can be any integer in the range of 0 to 32767.

Query

:STAT:OPER:COND? *The condition register is queried.*

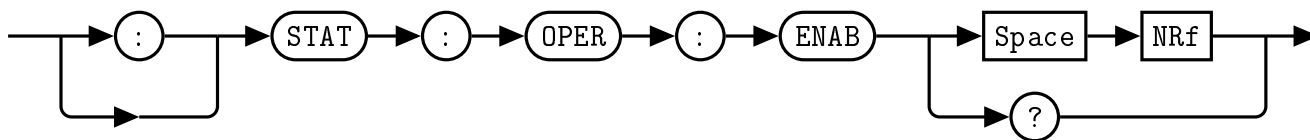
Reset Condition

On reset, the condition register is cleared.

5.3 STATus:OPERation:ENABle <NRf>

This command sets the enable mask for the status event register. A bit value of 1 in the mask will allow a positive transition in the associated summary bit of the event register if the event bit transitions to true.

Syntax



Allowed Values

The *NRf* parameter can be any integer in the range of 0 to 32767.

Query

:STAT:OPER:ENAB? *The event register enable bit mask is queried.*

Reset Condition

On reset, the enable bit mask register is cleared.

Error Message

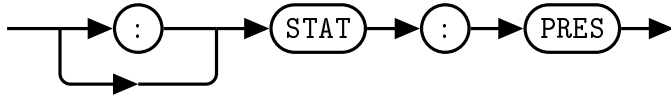
If the parameter is not in the recognized format, error -102, "Syntax error" occurs.

If the parameter is less than 0 or greater than 32767, error -222, "Data out of range" occurs.

5.4 STATus:PRESet

The PRESet command presets the STATus:QUESTionable:ENABLE register to 0. No other registers are affected. *CLS;*SRE 0;*ESE 0 is the recommended command sequence to reset all other status/event registers.

Syntax



Example

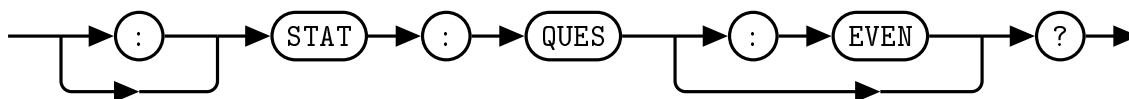
:STAT:PRESet *The questionable enable register is preset.*

5.5 STATus:QUEStionable?

This query returns the contents of the questionable status register. A value of 1 in the bit indicates the accuracy of the signal is of questionable quality.

The use of the :EVENT token is optional.

Syntax



Allowed Values

The *NRf* parameter can be any integer in the range of 0 to 32767.

Query

:STAT:QUES? *The questionable register is queried.*

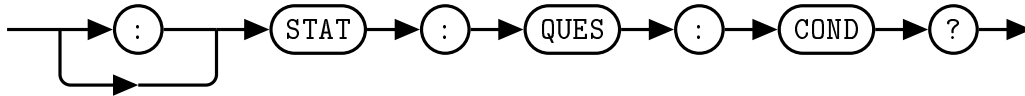
Reset Condition

On reset, the questionable register is cleared.

5.6 STATus:QUEStionable:CONDition?

This query returns the contents of the questionable condition register.

Syntax



Allowed Values

The *NRf* parameter can be any integer in the range of 0 to 32767.

Query

:STAT:QUES:COND? *The questionable condition register is queried.*

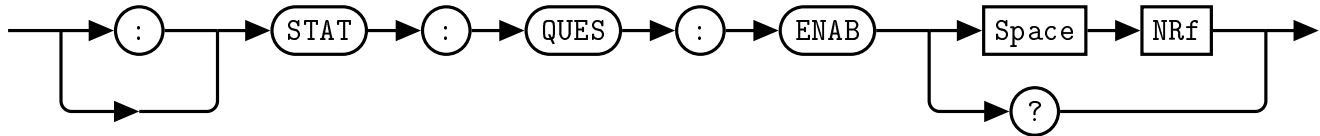
Reset Condition

On reset, the questionable condition register is cleared.

5.7 STATus:QUESTIONable:ENABLE <NRf>

This command sets the enable mask for the questionable event register. A bit value of 1 in the mask will allow a positive transition in the associated summary bit of the questionable event register if the event bit transitions to true.

Syntax



Allowed Values

The *NRf* parameter can be any integer in the range of 0 to 32767.

Query

:STAT:QUES:ENAB? *The questionable register enable bit mask is queried.*

Reset Condition

On reset, the enable bit mask register is cleared.

Error Message

If the parameter is not in the recognized format, error -102, "Syntax error" occurs.

If the parameter is less than 0 or greater than 32767, error -222, "Data out of range" occurs.

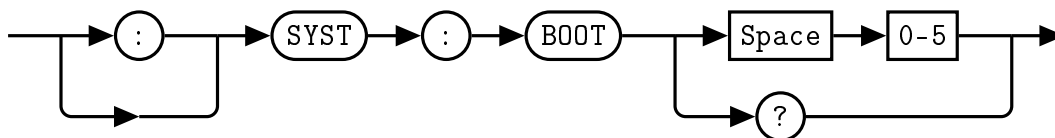
6. SYSTem Subsystem Command Reference

6.1 SYSTem:BOOTstate [0-5]

This command specifies a previously saved state to be loaded upon device startup. In addition to factory default state 0, there are 5 re-writeable memory locations. Any of these 6 boot states can be selected by choosing an index between 0 and 5. The restored parameters are the *RF Power State*, *External Reference Enabled*, *External LO1 Enabled*, *External LO2 Enabled*, *Tune Frequency*, *Channel 1 Converter Mode*, *Channel 1 Attenuator 1*, *Channel 1 Attenuator 2*, *Channel 1 ASR Enabled*, *Channel 1 AGL Enabled*, *Channel 2 Converter Mode*, *Channel 2 Attenuator 1*, *Channel 2 Attenuator 2*, *Channel 2 ASR Enabled*, *Channel 2 AGL Enabled*. For a detailed description of the parameters saved, see the relevant command descriptions in this manual. When this command is issued, the selected state will be loaded on the next power cycle or by issuing the **RST* command.

Note: R00 parameters returned were *RF Power State*, *External LO1 Enabled*, *External LO1 Switch Override*, *External LO2 Enabled*, *External LO2 Switch Override*, *External Reference Enabled*, *External Reference Switch Override*, *Tune Frequency*, *Upconverter LNA Power State*, *Upconverter Attenuation 1*, *Upconverter Attenuation 2*, *Upconverter ASR State*, *Downconverter LNA Power State*, and *Downconverter Attenuation*. These parameters have been changed for R02 hardware. Channel 1 and Channel 2 AGL Enabled status was added in R04 hardware.

Syntax



There are 6 memory locations, numbered 0 through 5. Memory location 0 contains the factory default settings, while locations 1-5 are user re-writeable using SYSTem:BOOTstate.

Example

:SYST:BOOT 1 *This command specifies state 1 to be loaded upon device powerup.*

Default Condition

The factory default setting for SYST:BOOT is 0.

Query

:SYST:BOOT? *This query returns a 0 - 5 to indicate the Combined RF Upconverter/Downconverter selected boot state.*

- 0 is returned if the selected boot state is 0

Error Message

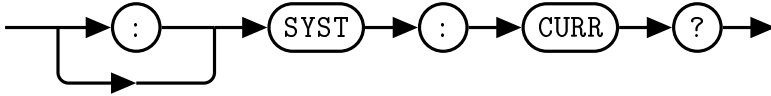
If the parameter is not in the recognized format, error -102, "Syntax error" occurs.

If the parameter is less than 0 or greater than 5, error -222, "Data out of range" occurs.

6.2 SYSTem:CURRent?

This command returns the current reading from the Combined RF Upconverter/Downconverter in Amps.

Syntax



Query Example

:SYST:CURR? *This query returns the QM1004-0.5-18 current draw in Amps.*

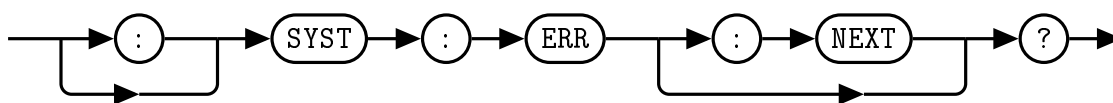
6.3 SYSTem:ERRor[:NEXT]?

This query returns error numbers and messages from the QM1004-0.5-18 error queue. When an error is generated by the QM1004-0.5-18, the error number and corresponding error message are stored in the error queue. Each time the error queue is queried, the first error in the error queue is returned. The errors are read out in the order of first-in first-out. To clear all errors in the error queue, use the *CLS command.

When the error queue is empty, a query of the error queue will return a 0, "No error" message. The error queue has a maximum capacity of 10 errors.

The use of the :NEXT token is optional.

Syntax



Query Example

:SYST:ERR? *Queries the system error.*

Error queue messages have the following format:



For example, -102, "Syntax error"

Reset Condition

On reset, the error queue is cleared.

Error Message List

Table 4.10: Error Codes and Messages

-101	Invalid character Invalid character was found in the command string.
-102	Syntax error Invalid syntax was found in the command string.
-103	Invalid separator Invalid separator was found in the command string.
-105	GET not allowed A Group Execute Trigger (GET) is not allowed within a command string.
-108	Parameter not allowed More parameters were received than expected for the command.

-109	Missing parameter Fewer parameters were received than expected for the command.
-112	Program mnemonic too long A command header was received which contained more than the maximum 12 characters allowed.
-113	Undefined header A command was received that is not valid for the Combined RF Upconverter/Downconverter.
-121	Invalid character in number An invalid character was found in the number specified for a parameter value.
-123	Exponent too large A numeric parameter was found whose exponent was larger than 32,000.
-124	Too many digits A numeric parameter was found whose mantissa contained more than 255 digits.
-128	Numeric data not allowed A numeric value was received within a command which does not accept a numeric value.
-131	Invalid suffix A unit was incorrectly specified for a numeric parameter.
-134	Suffix too long A unit used contained more than 12 characters.
-138	Suffix not allowed A unit was received following a numeric parameter which does not accept a unit.
-141	Invalid character data An invalid character was received.
-148	Character data not allowed A discrete parameter was received but a character string or numeric parameter was expected.
-151	Invalid string data An invalid string was received.
-158	String data not allowed A character string was received but not allowed for the command.
-161	Invalid block data A block data element was expected but was invalid.
-168	Block data not allowed A legal block data element was encountered but not allowed by the Product.

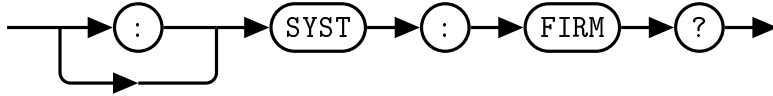
-178	Expression data not allowed A legal expression data element was encountered but not allowed by the Product.
-200	Execution error Indicates that an execution error has occurred.
-211	Trigger ignored Indicates that a trigger command was received but ignored because the Combined RF Upconverter/Downconverter was not in the wait for trigger state.
-213	Trigger ignored Indicates that a trigger command was received but ignored because the Combined RF Upconverter/Downconverter was not in the wait for trigger state.
-222	Data out of range A numeric parameter value is outside the valid range for the command.
-224	Illegal parameter value A discrete parameter was received which was not a valid choice for the command.
-230	Data corrupt or stale This occurs when a measurement command is attempted and either a reset has been received or the state of the Combined RF Upconverter/Downconverter has changed such that the measurement is no longer valid.
-241	Hardware missing The Combined RF Upconverter/Downconverter is unable to execute the command because the hardware does not support that feature.
-310	System error This error indicates a failure with the Combined RF Upconverter/Downconverter.
-330	Self-test failed The -330, "Self-test failed" error indicates a problem with the Combined RF Upconverter/Downconverter.
-350	Queue overflow The error queue is full and another error has occurred which could not be recorded.
-410	Query INTERRUPTED A command was received which sends data to the output buffer, but the output buffer contained data from a previous command. The output buffer is cleared when power has been off or after a *RST command has been issued.
-420	Query UNTERMINATED The Combined RF Upconverter/Downconverter was addressed to talk but a command has not been received which sends data to the output buffer.

-430	Query DEADLOCKED A command was received which generates too much data to fit in the output buffer and the input buffer is also full. Command execution continues but data is lost.
-440	Query UNTERMINATED after indefinite response The *IDN? command must be the last query command within a command string.
+0	No error No errors in the error queue. Device is operating normally.
+110	Invalid Command For Specified Device The issued command is invalid for the specified device.

6.4 SYSTem:FIRMware?

This command returns the current PIC and FPGA firmware versions of the Combined RF Upconverter/Downconverter.

Syntax



Query Example

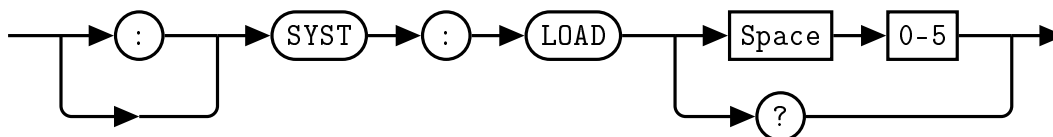
:SYST:FIRM? *This query returns the current firmware versions of the Combined RF Upconverter/Downconverter.*

6.5 SYSTem:LOADstate [0-5]

This command restores a previously saved state from non-volatile memory. In addition to factory default state 0, there are 5 re-writable memory locations, specified by choosing an index between 1 and 5. The restored parameters are the *RF Power State*, *External Reference Enabled*, *External LO1 Enabled*, *External LO2 Enabled*, *Tune Frequency*, *Channel 1 Converter Mode*, *Channel 1 Attenuator 1*, *Channel 1 Attenuator 2*, *Channel 1 ASR Enabled*, *Channel 1 AGL Enabled*, *Channel 2 Converter Mode*, *Channel 2 Attenuator 1*, *Channel 2 Attenuator 2*, *Channel 2 ASR Enabled*, *Channel 2 AGL Enabled*. For a detailed description of the parameters saved, see the relevant command descriptions in this manual. When the SYSTem:LOADstate command is called, these parameters will be applied to the device.

Note: R00 parameters returned were *RF Power State*, *External LO1 Enabled*, *External LO1 Switch Override*, *External LO2 Enabled*, *External LO2 Switch Override*, *External Reference Enabled*, *External Reference Switch Override*, *Tune Frequency*, *Upconverter LNA Power State*, *Upconverter Attenuation 1*, *Upconverter Attenuation 2*, *Upconverter ASR State*, *Downconverter LNA Power State*, and *Downconverter Attenuation*. These parameters have been changed for R02 hardware. Channel 1 and Channel 2 AGL Enabled status was added in R04 hardware.

Syntax



There are 6 memory locations, numbered 0 through 5. Memory location 0 contains the factory default settings, while locations 1-5 are user re-writable using SYSTem:SAVEstate.

Example

`:SYST:LOAD 4` *This command loads the state 4 parameters from non-volatile memory and applies them to the device.*

Error Message

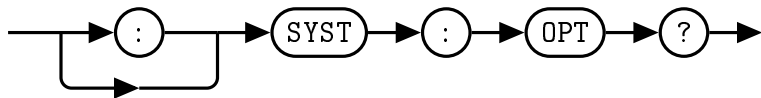
If the parameter is not in the recognized format, error -102, "Syntax error" occurs.

If the parameter is less than 0 or greater than 5, error -222, "Data out of range" occurs.

6.6 SYSTem:OPTions?

This query returns the installed options used in the Combined RF Upconverter/Downconverter. The response is in the format XXX,YYY where XXX is the LO configuration option and YYY is the IF configuration option.

Syntax



Query Example

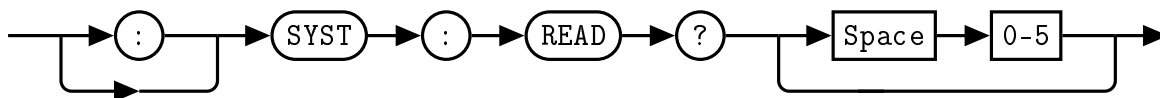
`:SYST:OPT?` *This query returns the installed options of the Combined RF Upconverter/Downconverter.*

6.7 SYSTem:READstate? [0-5]

This query allows the user to read the parameters of the stored states without changing any internal registers. The query output is a list of parameters for the selected state. If no state parameter is given, the returned state is state 0. The list of state parameters contains comma separated values, without spaces, in the following order: *RF Power State, External Reference Enabled, External LO1 Enabled, External LO2 Enabled, Tune Frequency, Channel 1 Converter Mode, Channel 1 Attenuator 1, Channel 1 Attenuator 2, Channel 1 ASR Enabled, Channel 1 AGL Enabled, Channel 2 Converter Mode, Channel 2 Attenuator 1, Channel 2 Attenuator 2, Channel 2 ASR Enabled, Channel 2 AGL Enabled*. See the respective command definitions for descriptions of each parameter.

Note: R00 parameters returned were *RF Power State, External LO1 Enabled, External LO1 Switch Override, External LO2 Enabled, External LO2 Switch Override, External Reference Enabled, External Reference Switch Override, Tune Frequency, Upconverter LNA Power State, Upconverter Attenuation 1, Upconverter Attenuation 2, Upconverter ASR State, Downconverter LNA Power State, and Downconverter Attenuation*. These parameters have been changed for R02 hardware. Channel 1 and Channel 2 AGL Enabled status was added in R04 hardware.

Syntax



Query

:SYST:READ? 0 *This query requests the parameter values of state 0.*

Response: 0,0,0,0,9.250000,1,0.0,0.0,1,0,1,0.0,0.0,1,0

- 0 = POWER:RF is set to 0 or OFF. (page 64)
- 0 = FREQUENCY:REFERENCE:EXTERNAL is set to 0 or Internal. (page 61)
- 0 = FREQUENCY:LO1:EXTERNAL is set to 0 or Internal. (page 57)
- 0 = FREQUENCY:LO2:EXTERNAL is set to 0 or Internal. (page 59)
- 9.250000 = FREQUENCY:TUNE is set to 9.25 GHz. (page 51)
- 1 = FREQUENCY:CH1:MODE is set to 1. (page 54).
- 0.0 = POWER:CH1:AT1 is set to 0.0 dB (page 66)
- 0.0 = POWER:CH1:AT2 is set to 0.0 dB (page 67)
- 1 = FREQUENCY:CH1:ASR is set to 1 or ON. (page 53)
- 0 = POWER:CH1:AGL is set to 0 or OFF. (page 65)
- 1 = FREQUENCY:CH2:MODE is set to 1. (page 56).
- 0.0 = POWER:CH2:AT1 is set to 0.0 dB (page 70)

- 0.0 = POWER:CH2:AT2 is set to 0.0 dB (page 71)
- 1 = FREQUENCY:CH2:ASR is set to 1 or ON. (page 55)
- 0 = POWER:CH2:AGL is set to 0 or OFF. (page 69)

Error Message

If the parameter is not in the recognized format, error -102, "Syntax error" occurs.

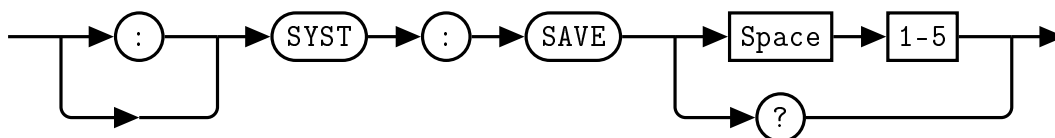
If the parameter is less than 0 or greater than 5, error -222, "Data out of range" occurs.

6.8 SYSTem:SAVEstate [1-5]

This command saves the current setup to non-volatile memory. There are 5 re-writeable memory locations, specified by choosing an index between 1 and 5. Any of the 5 states can be restored on startup when specified with the SYSTem:BOOTstate command. The parameters saved are the *RF Power State, External Reference Enabled, External LO1 Enabled, External LO2 Enabled, Tune Frequency, Channel 1 Converter Mode, Channel 1 Attenuator 1, Channel 1 Attenuator 2, Channel 1 ASR Enabled, Channel 1 AGL Enabled, Channel 2 Converter Mode, Channel 2 Attenuator 1, Channel 2 Attenuator 2, Channel 2 ASR Enabled, Channel 2 AGL Enabled*. For a detailed description of the parameters saved, see the relevant command descriptions in this manual. NOTE: The MEM_CLR button on the back panel will rewrite the contents of states 1-5 with the contents of state 0 when depressed, serving as a reset to factory defaults.

Note: R00 parameters returned were *RF Power State, External LO1 Enabled, External LO1 Switch Override, External LO2 Enabled, External LO2 Switch Override, External Reference Enabled, External Reference Switch Override, Tune Frequency, Upconverter LNA Power State, Upconverter Attenuation 1, Upconverter Attenuation 2, Upconverter ASR State, Downconverter LNA Power State, and Downconverter Attenuation*. These parameters have been changed for R02 hardware. Channel 1 and Channel 2 AGL Enabled status was added in R04 hardware.

Syntax



There are 5 memory locations, numbered 1 through 5. Memory location 0 contains the factory default settings and is write-protected.

Example

:SYST:SAVE 3 *This command saves the current state to memory location 3*

Error Message

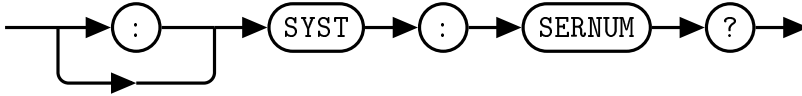
If the parameter is not in the recognized format, error -102, "Syntax error" occurs.

If the parameter is less than 1 or greater than 5, error -222, "Data out of range" occurs.

6.9 SYSTem:SERialNUMBER?

This query returns the serial number of the device.

Syntax



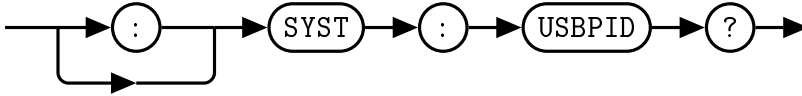
Query Example

:SYST:SERNUM? *This query returns the serial number of the device.*

6.10 SYSTem:USBPID?

This query returns the USB PID of the Combined RF Upconverter/Downconverter.

Syntax



Query Example

:SYST:USBPID? *This query returns USB PID of the Combined RF Upconverter/Downconverter.*

7. IEEE 488.2 Command Reference

7.1 Introduction

This chapter contains information on the IEEE-488.2 Common Commands that the Combined RF Upconverter/Downconverter supports.

The IEEE-488.2 Common Command descriptions are listed below.

Table 4.11: IEEE 488.2 Common commands

<i>*CLS</i>	Clear Status	Page 96
<i>*ESE</i> and <i>*ESE?</i>	Event Status Enable	Page 97
<i>*ESR?</i>	Event Status Register	Page 98
<i>*IDN?</i>	Identify	Page 99
<i>*OPC</i> and <i>*OPC?</i>	Operation Complete	Page 100
<i>*RCL</i>	Recall	Page 101
<i>*RST</i>	Reset	Page 102
<i>*SAV</i>	Save	Page 103
<i>*SDS</i>	Save Default Settings	Page 104
<i>*SRE</i> and <i>*SRE?</i>	Service Request Enable	Page 105
<i>*STB?</i>	Status Byte	Page 106
<i>*TST?</i>	Test	Page 107
<i>*WAI</i>	Wait	Page 108

7.2 *CLS

The *CLS (CLear Status) command clears the data structures. The SCPI registers are all cleared.

Syntax



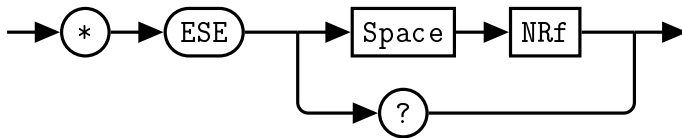
7.3 *ESE <NRf>

The *ESE (Event Status Enable) command sets the Standard Event Status Enable Register. This register contains a mask value for the bits to be enabled in the Standard Event Status Register. A 1 in the enable register enables the corresponding bit in the Status Register, a 0 disables the corresponding bit in the Status Register. The parameter value when expressed in base 2, represents the bit values of the Standard Event Status Enable Register. Table 4.12 shows the contents of this register.

Table 4.12: *ESE bit mapping

Bit	Base 2	Meaning
0	1	Operation Complete
1	2	Request Control (not used)
2	4	Query Error
3	8	Device Dependent Error
4	16	Execution Error
5	32	Command Error
6	64	Not Used
7	128	Power On

Syntax



Allowed Values

The *NRf* parameter can be any integer in the range of 0 to 255.

Query

*ESE? *This query returns the contents of the Standard Event Status Enable Register.*

Error Message

If the parameter is not in the recognized format, error -102, "Syntax error" occurs.

If the parameter is less than 0 or greater than 255, error -222, "Data out of range" occurs.

7.4 *ESR?

The **ESR?* query returns the contents of the Standard Event Status Register then clears it. The returned value is in the range of 0 to 255. Table 4.13 shows the contents of this register.

Table 4.13: *ESR? mapping

Bit	Base 2	Meaning
0	1	Operation Complete
1	2	Not Used
2	4	Query Error
3	8	Device Dependent Error
4	16	Execution Error
5	32	Command Error
6	64	Not Used
7	128	Power On

Syntax



7.5 *IDN?

The **IDN?* query allows the connected device to identify itself. The string returned is:

Quonset Microwave,<Product Number>,<Serial Number>,<Firmware>

where:

- *<Product Number>* identifies the product number of the host
- *<Serial Number>* uniquely identifies the host
- *<Firmware>* returns the firmware of the host

Syntax



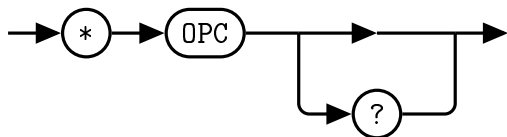
7.6 *OPC

The *OPC (Operation Complete) command causes the QM1004-0.5-18 Combined RF Upconverter/Downconverter to set the operation complete bit in the Standard Event Status Register when all pending device operations have been completed.

Table 4.14: *OPC mapping

Bit	Base 2	Meaning
0	1	Operation Complete
1	2	Not Used
2	4	Query Error
3	8	Device Dependent Error
4	16	Execution Error
5	32	Command Error
6	64	Not Used
7	128	Power On

Syntax



Query

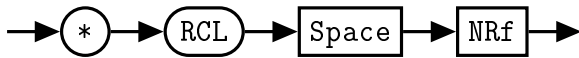
*OPC? *This query places a 1 in the output queue when all device operations have been completed.*

7.7 *RCL <NRf>

The *RCL (ReCaLI) command restores a previously saved state from non-volatile memory. In addition to factory default state 0, there are 5 re-writable memory locations, specified by choosing an index between 1 and 5. The restored parameters are the *RF Power State*, *External Reference Enabled*, *External LO1 Enabled*, *External LO2 Enabled*, *Tune Frequency*, *Channel 1 Converter Mode*, *Channel 1 Attenuator 1*, *Channel 1 Attenuator 2*, *Channel 1 ASR Enabled*, *Channel 1 AGL Enabled*, *Channel 2 Converter Mode*, *Channel 2 Attenuator 1*, *Channel 2 Attenuator 2*, *Channel 2 ASR Enabled*, *Channel 2 AGL Enabled*. For a detailed description of the parameters saved, see the relevant command descriptions in this manual. When the *RCL command is called, these parameters will be applied to the device.

Note: R00 parameters returned were *RF Power State*, *External LO1 Enabled*, *External LO1 Switch Override*, *External LO2 Enabled*, *External LO2 Switch Override*, *External Reference Enabled*, *External Reference Switch Override*, *Tune Frequency*, *Upconverter LNA Power State*, *Upconverter Attenuation 1*, *Upconverter Attenuation 2*, *Upconverter ASR State*, *Downconverter LNA Power State*, and *Downconverter Attenuation*. These parameters have been changed for R02 hardware. Channel 1 and Channel 2 AGL Enabled status was added in R04 hardware.

Syntax



Allowed Values

The *NRf* parameter can be any integer in the range of 0 to 5.

Error Message

If the parameter is not in the recognized format, error -102, "Syntax error" occurs.

If the parameter is less than 0 or greater than 5, error -222, "Data out of range" occurs.

7.8 *RST

The **RST* (ReSeT) command returns the QM1004-0.5-18 Combined RF Upconverter/Downconverter to its initial power-up state.

Syntax

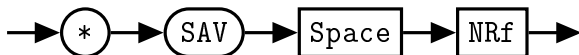


7.9 *SAV <NRf>

The *SAV (SAVe) command saves the current setup to non-volatile memory. There are 5 re-writeable memory locations, specified by choosing an index between 1 and 5. Any of the 5 states can be restored on startup when specified with the SYSTem:BOOTstate command. The parameters saved are the *RF Power State, External Reference Enabled, External LO1 Enabled, External LO2 Enabled, Tune Frequency, Channel 1 Converter Mode, Channel 1 Attenuator 1, Channel 1 Attenuator 2, Channel 1 ASR Enabled, Channel 1 AGL Enabled, Channel 2 Converter Mode, Channel 2 Attenuator 1, Channel 2 Attenuator 2, Channel 2 ASR Enabled, Channel 2 AGL Enabled*. For a detailed description of the parameters saved, see the relevant command descriptions in this manual. NOTE: The MEM_CLR button on the back panel will rewrite the contents of states 1-5 with the contents of state 0 when depressed, serving as a reset to factory defaults.

Note: R00 parameters returned were *RF Power State, External LO1 Enabled, External LO1 Switch Override, External LO2 Enabled, External LO2 Switch Override, External Reference Enabled, External Reference Switch Override, Tune Frequency, Upconverter LNA Power State, Upconverter Attenuation 1, Upconverter Attenuation 2, Upconverter ASR State, Downconverter LNA Power State, and Downconverter Attenuation*. These parameters have been changed for R02 hardware. Channel 1 and Channel 2 AGL Enabled status was added in R04 hardware.

Syntax



Allowed Values

The *NRf* parameter can be any integer in the range of 1 to 5.

Error Message

If the parameter is not in the recognized format, error -102, "Syntax error" occurs.

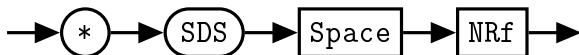
If the parameter is less than 1 or greater than 5, error -222, "Data out of range" occurs.

7.10 *SDS <NRf>

The *SDS (Save Default device Settings) command restores the specified state of the QM1004-0.5-18 Combined RF Upconverter/Downconverter to the default state settings. There are 5 re-writeable memory locations, specified by choosing an index between 1 and 5. The parameters restored are the *RF Power State, External Reference Enabled, External LO1 Enabled, External LO2 Enabled, Tune Frequency, Channel 1 Converter Mode, Channel 1 Attenuator 1, Channel 1 Attenuator 2, Channel 1 ASR Enabled, Channel 1 AGL Enabled, Channel 2 Converter Mode, Channel 2 Attenuator 1, Channel 2 Attenuator 2, Channel 2 ASR Enabled, Channel 2 AGL Enabled*. For a detailed description of the parameters saved, see the relevant command descriptions in this manual. Issuing this command does not change the current settings. NOTE: The MEM_CLR button on the back panel will rewrite the contents of states 1-5 with the contents of state 0 when depressed, serving as a reset to factory defaults.

Note: R00 parameters returned were *RF Power State, External LO1 Enabled, External LO1 Switch Override, External LO2 Enabled, External LO2 Switch Override, External Reference Enabled, External Reference Switch Override, Tune Frequency, Upconverter LNA Power State, Upconverter Attenuation 1, Upconverter Attenuation 2, Upconverter ASR State, Downconverter LNA Power State, and Downconverter Attenuation*. These parameters have been changed for R02 hardware. Channel 1 and Channel 2 AGL Enabled status was added in R04 hardware.

Syntax



Allowed Values

The *NRf* parameter can be any integer in the range of 1 to 5.

Error Message

If the parameter is not in the recognized format, error -102, "Syntax error" occurs.

If the parameter is less than 1 or greater than 5, error -222, "Data out of range" occurs.

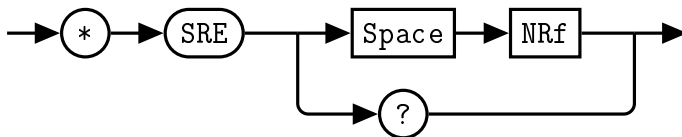
7.11 *SRE <NRf>

The *SRE command sets the Service Request Enable register bits. This register contains a mask value for the bits to be enabled in the Status Byte Register. A 1 in the enable register enables the corresponding bit in the Status Register, a 0 disables the corresponding bit in the Status Register. The parameter value when expressed in base 2, represents bits 0 to 5 and bit 7 of the Service Request Enable Register. Bit 6 is not used and is always 0. Table 4.15 shows the contents of this register.

Table 4.15: *SRE bit mapping

Bit	Base 2	Meaning
0	1	Not used
1	2	Not Used (not used)
2	4	Device Dependent
3	8	Questionable Status Summary
4	16	Message Available
5	32	Event Status Bit
6	64	Not Used
7	128	Operation Status Summary

Syntax



Allowed Values

The NRf parameter can be any integer in the range of 0 to 255.

Query

*SRE? *This query returns the contents of bits 0 to 5 and bit 7 of the Service Request Enable Register. Bit 6 is always 0.*

Error Message

If the parameter is not in the recognized format, error -102, "Syntax error" occurs.
 If the parameter is less than 0 or greater than 255, error -222, "Data out of range" occurs.

7.12 *STB?

The **STB?* (S**T**atus **B**yte) query returns bit 0 to 5 and bit 7 of the QM1004-0.5-18 Combined RF Upconverter/Downconverter status byte and returns the Master Summary Status (MSS) as bit 6. The MSS is inclusive OR of the bitwise combination (excluding bit 6) of the Status Byte and the Service Request Enable registers. The format of the return is an integer between 0 and 255. Table 4.16 shows the contents of this register.

Table 4.16: *STB? mapping

Bit	Base 2	Meaning
0	1	Not used
1	2	Device Dependent 0 - No device status condition has occurred 1 - A device status condition has occurred
2	4	Error/Event Queue 0 = Queue empty 1 = Queue not empty
3	8	Questionable Status Summary 0 - No Q UESTionable status conditions have occurred 1 - A Q UESTionable status condition has occurred
4	16	Message Available 0 - no output messages are ready 1 - an output message is ready
5	32	Event Status Bit 0 - no event status has occurred 1 - an event status condition has occurred
6	64	Master Summary Status 0 - Combined RF Upconverter/Downconverter not requesting service 1 - there is at least one reason for requesting service
7	128	Operation Status Summary 0 = No O PERation status conditions have occurred 1 = An O PERation status condition has occurred

Syntax



7.13 *TST?

The **TST?* query causes the QM1004-0.5-18 Combined RF Upconverter/Downconverter to perform a self-test. The result of the self-test is placed in the output queue.

- 0 is returned if the test passes

Syntax



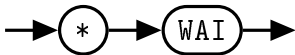
7.14 *WAI

The **WAI* (WAI) command causes the QM1004-0.5-18 Combined RF Upconverter/Downconverter to wait until either:

- All pending operations are complete
- The *Device Clear* command is received
- Power is cycled

before executing any subsequent commands or queries.

Syntax





5 Windows Control GUI

In This Chapter

1. Overview	110
2. Connection	111
3. Supported Devices	111

1. Overview

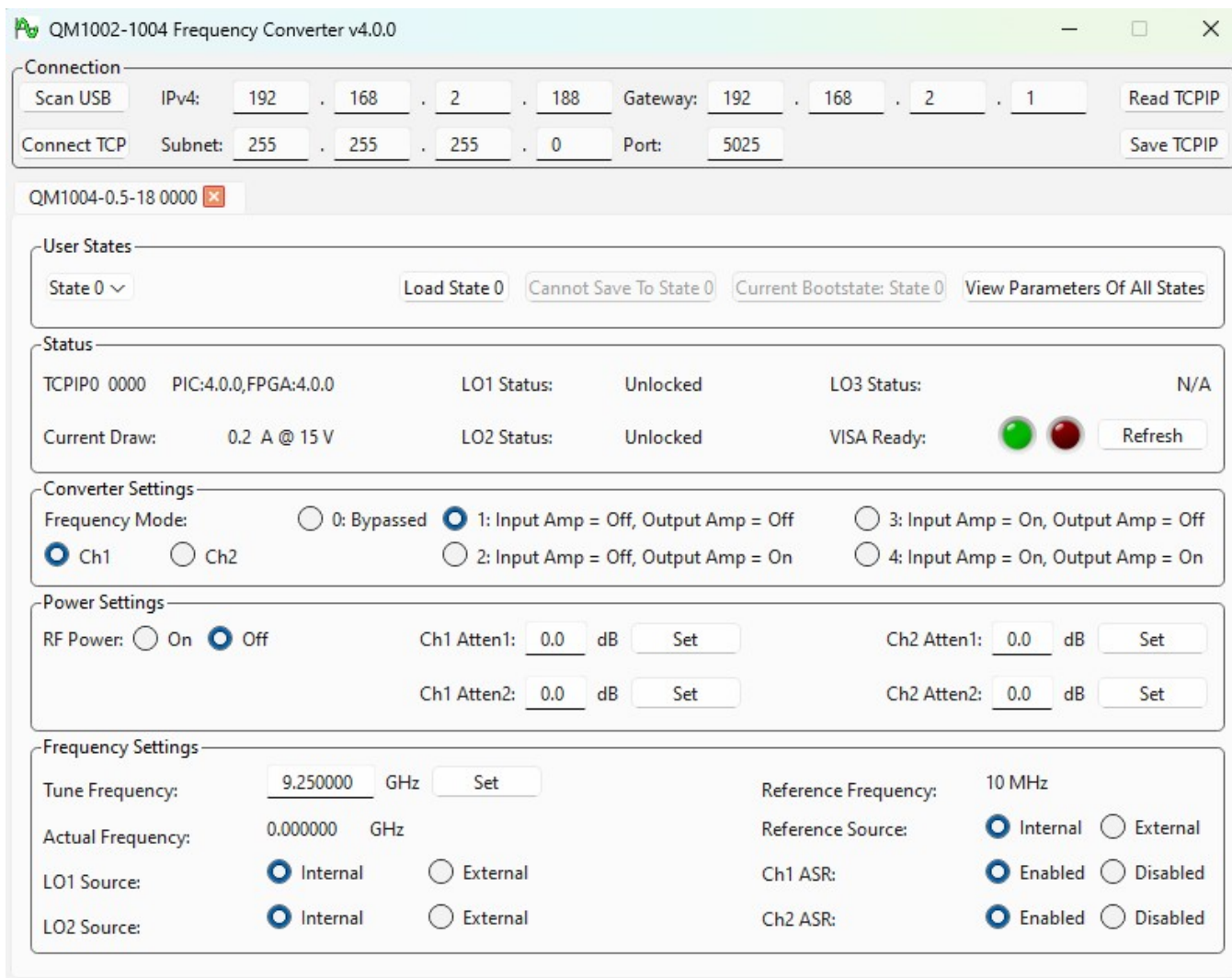


Figure 5.1: Windows® Control GUI

The Graphical User Interface (GUI) for the QM1004-0.5-18 is shown above in Figure 5.1. This GUI provides the current status and provides all of the essential functionality for the Combined RF Upconverter/Downconverter system. The GUI allows the user to toggle RF power, and to set the converter mode, user states, attenuation control, tune the device, and change reference settings.

2. Connection

At startup, the GUI scans the USB bus for QM1004-0.5-18 devices and opens them. It then attempts to read TCP/IP settings from the device and switch to a TCP connection if possible. In order to use the QM1004-0.5-18 without connecting the USB, manually entering the TCP/IP settings and clicking Connect is required.

3. Supported Devices

The QM1002-1004 GUI allows control of all QM1002-1004 family devices. Currently supported hardware includes:

- QM1002-0.5-18-1-100-207
- QM1003-0.5-18-1-100-201
- QM1003-0.5-18-1-100-205-ELP-RFPass
- QM1003-0.5-18-2-100-205-ELP-RFPass
- QM1003-0.5-18-1-100-207
- QM1004-0.5-18-100-200
- QM1004-0.5-18-100-204
- QM1004-0.5-18-100-205
- QM1004-0.5-18-100-205-ELP-RFPass
- QM1004-0.5-18-100-206

Index

- Control Commands, 35
 - EtherNET:DHCP, 42
 - EtherNET:GATEway, 43
 - EtherNET:IPADDRESS, 44
 - EtherNET:MACaddress, 45
 - EtherNET:PORT, 46
 - EtherNET:SUBnet, 47
 - FREQUENCY:ASR, 48
 - FREQUENCY:CH1:ASR, 53
 - FREQUENCY:CH1:MODE, 54
 - FREQUENCY:CH2:ASR, 55
 - FREQUENCY:CH2:MODE, 56
 - FREQUENCY:LO1:EXTernal, 57
 - FREQUENCY:LO1:LOCK, 58
 - FREQUENCY:LO2:EXTernal, 59
 - FREQUENCY:LO2:LOCK, 60
 - FREQUENCY:LOCK, 49
 - FREQUENCY:MODE, 50
 - FREQUENCY:REFERENCE:EXTernal, 61
 - FREQUENCY:TUNE, 51
 - FREQUENCY:TUNERACTual, 52
 - POWER:AGL, 62
 - POWER:CH1:AGL, 65
 - POWER:CH1:AT1, 66
 - POWER:CH1:AT2, 67
 - POWER:CH1:LNA, 68
 - POWER:CH2:AGL, 69
 - POWER:CH2:AT1, 70
 - POWER:CH2:AT2, 71
 - POWER:CH2:LNA, 72
 - POWER:LNA, 63
 - POWER:RF, 64
 - STATUS:OPERation, 73
 - STATUS:OPERation:CONDition, 74
 - STATUS:OPERation:ENABLE, 75
 - STATUS:OPERation:QUESTionable, 78
 - STATUS:PRESet, 76
 - STATUS:QUESTionable, 77
 - STATUS:QUESTionable:ENABLE, 79
 - SYSTEM:BOOTSTATE, 80
 - SYSTEM:CURRENT, 81
 - SYSTEM:ERROR, 82
 - SYSTEM:FIRMWARE, 86
 - SYSTEM:LOADstate, 87
 - SYSTEM:OPTions, 88
 - SYSTEM:READstate, 89
 - SYSTEM:SAVE, 91
 - SYSTEM:SERialNUMBER, 92
 - SYSTEM:USBPID, 93
 - SYSTEM:VERSion, 94
- Default Units, 28
- EtherNET Subsystem Command Reference
 - EtherNET:DHCP, 42
 - EtherNET:GATEway, 43
 - EtherNET:IPADDRESS, 44
 - EtherNET:MACaddress, 45
 - EtherNET:PORT, 46
 - EtherNET:SUBnet, 47
- Firmware Updates, 8
 - FPGA Firmware Updates, 11
 - FTP Location, 9
 - Introduction, 9
 - PIC Firmware Updates, 19
- FREQUENCY Subsystem Command Reference
 - FREQUENCY:ASR, 48
 - FREQUENCY:CH1:ASR, 53
 - FREQUENCY:CH1:MODE, 54
 - FREQUENCY:CH2:ASR, 55
 - FREQUENCY:CH2:MODE, 56
 - FREQUENCY:LO1:EXTernal, 57
 - FREQUENCY:LO1:LOCK, 58
 - FREQUENCY:LO2:EXTernal, 59
 - FREQUENCY:LO2:LOCK, 60
 - FREQUENCY:LOCK, 49
 - FREQUENCY:MODE, 50
 - FREQUENCY:REFERENCE:EXTernal, 61
 - FREQUENCY:TUNE, 51
 - FREQUENCY:TUNERACTual, 52

- General Description, 5
- General Safety Information, iii
- IEEE 488.2 Command Reference, 95
 - *CLS, 96
 - *ESE, 97
 - *ESR?, 98
 - *IDN?, 99
 - *OPC, 100
 - *RCL, 101
 - *RST, 102
 - *SAV, 103
 - *SDS, 104
 - *SRE, 105
 - *STB?, 106
 - *TST?, 107
 - *WAI, 108
- Input/Output Specifications, 3
- Notices, i
- Overview, 2
- POWER subsystem Command Reference
 - POWER:AGL, 62
 - POWER:CH1:AGL, 65
 - POWER:CH1:AT1, 66
 - POWER:CH1:AT2, 67
 - POWER:CH1:LNA, 68
 - POWER:CH2:AGL, 69
 - POWER:CH2:AT1, 70
 - POWER:CH2:AT2, 71
 - POWER:CH2:LNA, 72
 - POWER:LNA, 63
 - POWER:RF, 64
- Product Safety, ii
- Remote Operation, 25
 - Introduction, 27
 - Command Syntax, 27
 - Compliance Information, 31
 - Default Units, 28
 - Diagram Syntax Conventions, 27
 - Input Message Terminators, 31
 - SCPI Data Types, 28
 - Status Reporting, 28
 - USB, 27
 - VISA Descriptors and Configuration, 33
- TCPIP, 34
- USB, 33
- STATus Subsystem Command Reference
 - STATus:OPERation, 73
 - STATus:OPERation:CONDition, 74
 - STATus:OPERation:ENABle, 75
 - STATus:OPERation:QUEStionable, 78
 - STATus:PRESet, 76
 - STATus:QUEStionable, 77
 - STATus:QUEStionable:ENABle, 79
- System Block Diagram, 6
- SYSTem Subsystem Command Reference
 - SYSTem:BOOTSTATE, 80
 - SYSTem:CURRent, 81
 - SYSTem:ERRor, 82
 - SYSTem:FIRMWare, 86
 - SYSTem:LOADstate, 87
 - SYSTem:OPTions, 88
 - SYSTem:READstate, 89
 - SYSTem:SAVE, 91
 - SYSTem:SERialNUMBER, 92
 - SYSTem:USBPID, 93
 - SYSTem:VERSion, 94
- Windows Control GUI, 109
 - Connection, 111
 - Overview, 110
 - Supported Devices, 111



Quonset Microwave
www.quonsetmicrowave.com



1004-012-21

Revision 4.6.0, April 2026